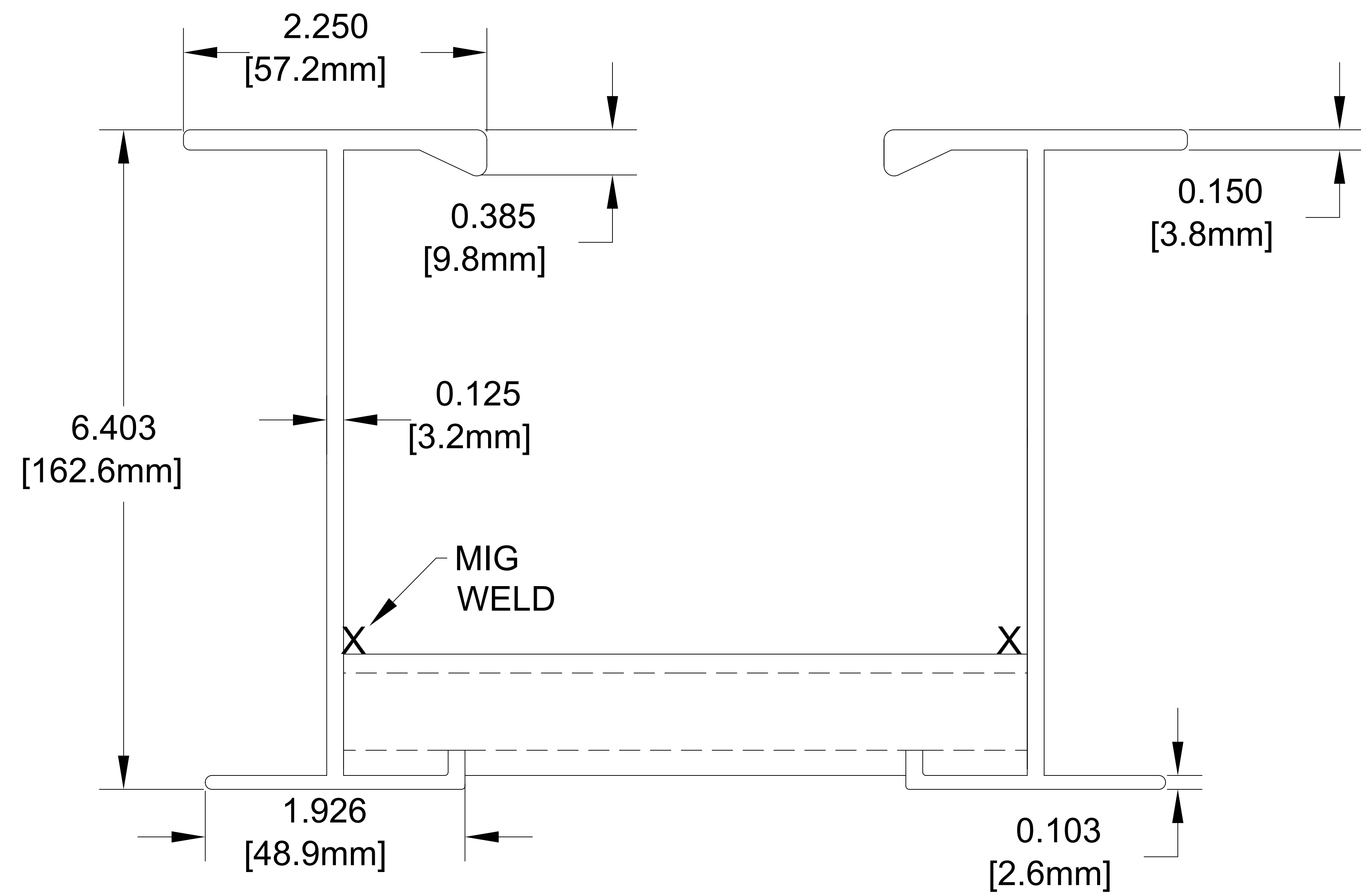


665A ALUMINUM CABLE TRAY -NEMA 24C CSA E1 @ 6m

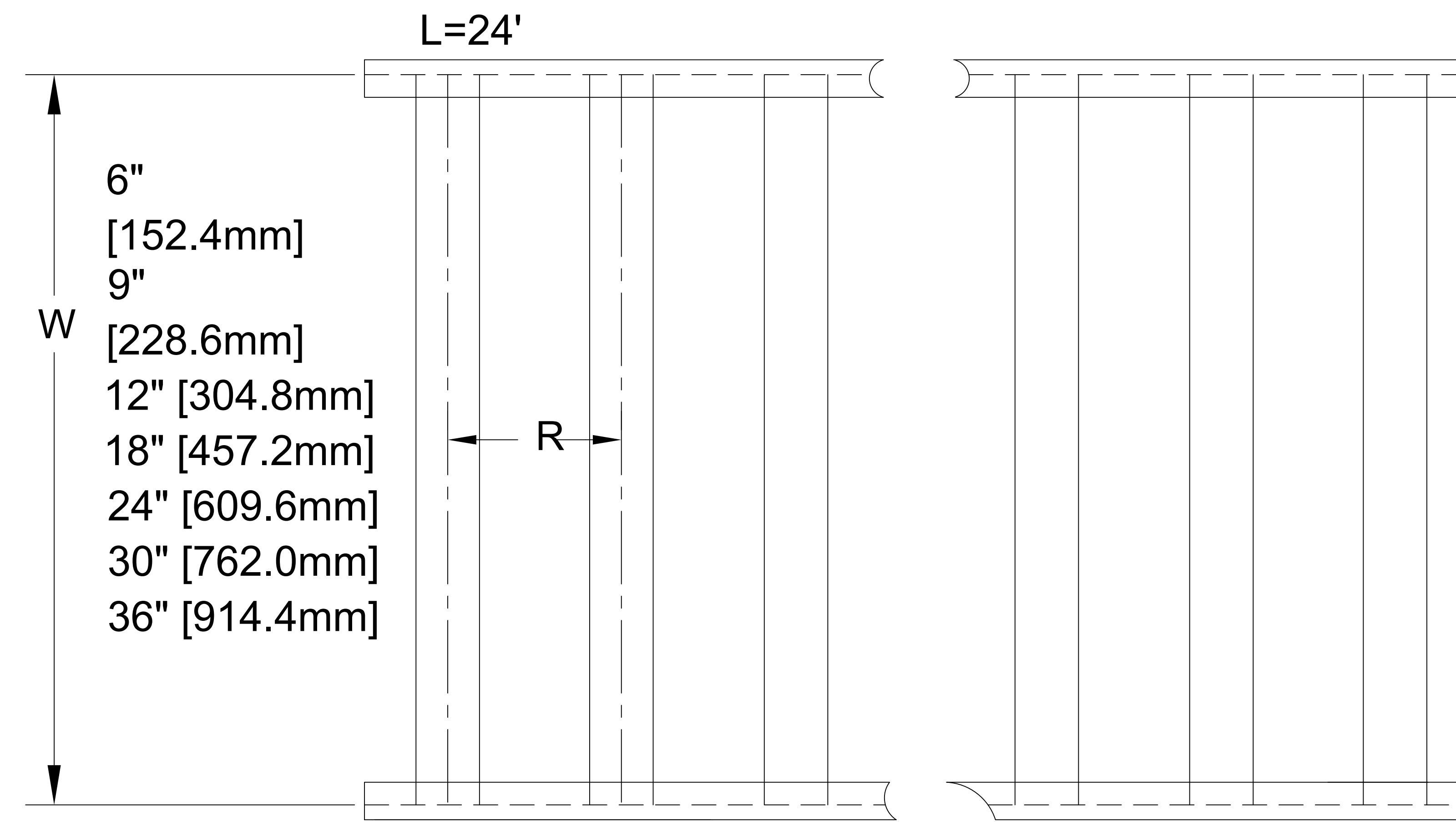


Data (2 Rails)
 $I_x = 16.96 \text{ in.}^4$ $S_x = 6.24 \text{ in.}^3$ $UL \text{ AREA} = 2.87 \text{ in.}^2$ $EGC = 2000 \text{ AMPS}$
 Allowable Loads - Simple Beam Loads Data - (Factor of safety - 1.5)

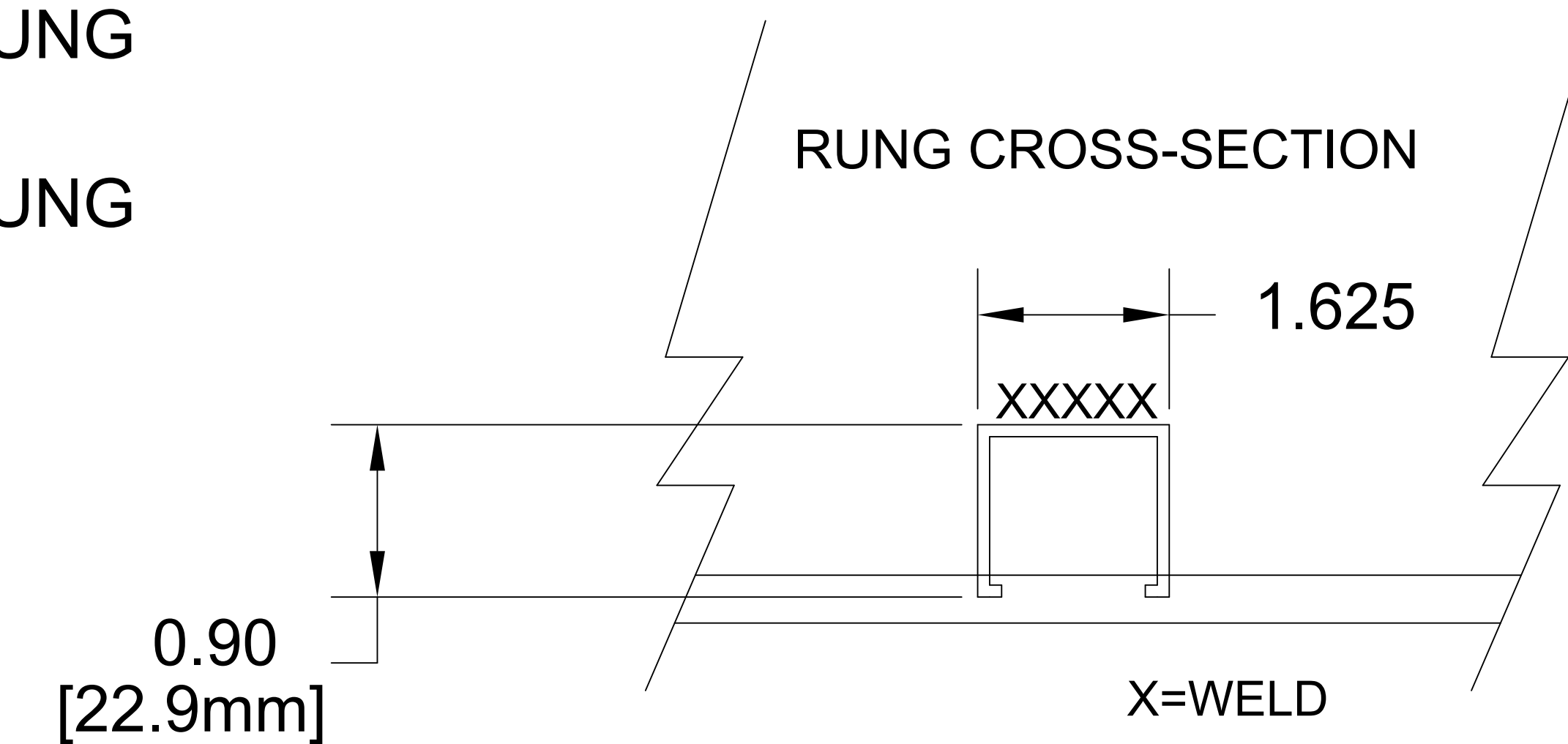
Span	feet	12	14	16	18	20	24
	meters	3.66	4.27	4.88	5.49	6.10	9.14
Load	lbs/ft	430	316	242	191	155 *	104
	kg/m	639.8	470.2	360.1	284.2	230.6	154.8
Deflect.	in.	1.20	1.61	2.11	2.65	3.29	4.58
	mm.	30.5	40.9	53.6	67.3	83.6	116.3
**	K-factor	.0028	.0051	.0087	.0319	.0212	.0043

** K x W may be used to calculate deflection of lighter loads at indicated space above

Furnished with 4 Hole Splice Plate (pair) and 8, 9 TBN302 3/8" Round head serrated stainless bolt & integral lock washer nut assemblies.



R=9" [228.6mm] RUNG SPACING
 R=12" [304.8mm] RUNG SPACING
 R=18" [457.2mm] RUNG SPACING



#11118 Rung (1.625" W x .9" H)

Notes: 1. Sheet Metal tolerances 2. Unless noted all dimensions are in inches

Material
ALUM ALLOY
6063-T6

This drawing and specifications are the property of Chalfant Inc. and shall not be used for the basis of mfg. or sale or quotation of illustrated product without permission.

Chalfant Cleveland, OH Tel. 216-521-7922 Fax 216-521-9922

SIZE	FSCM NO.	DWG NO.	REV
A		665A "W"010-"R"	
SCALE	SHEET		