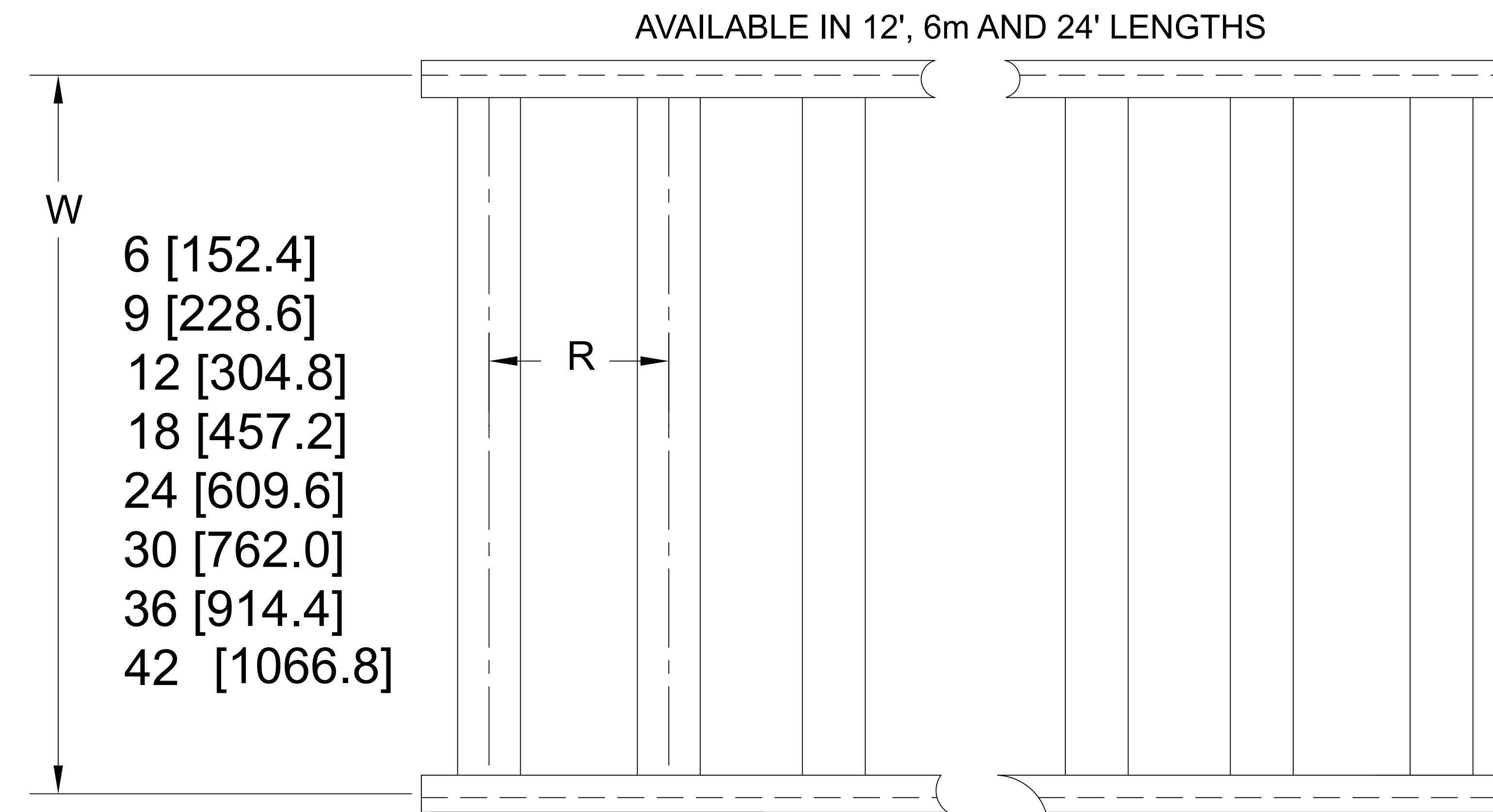
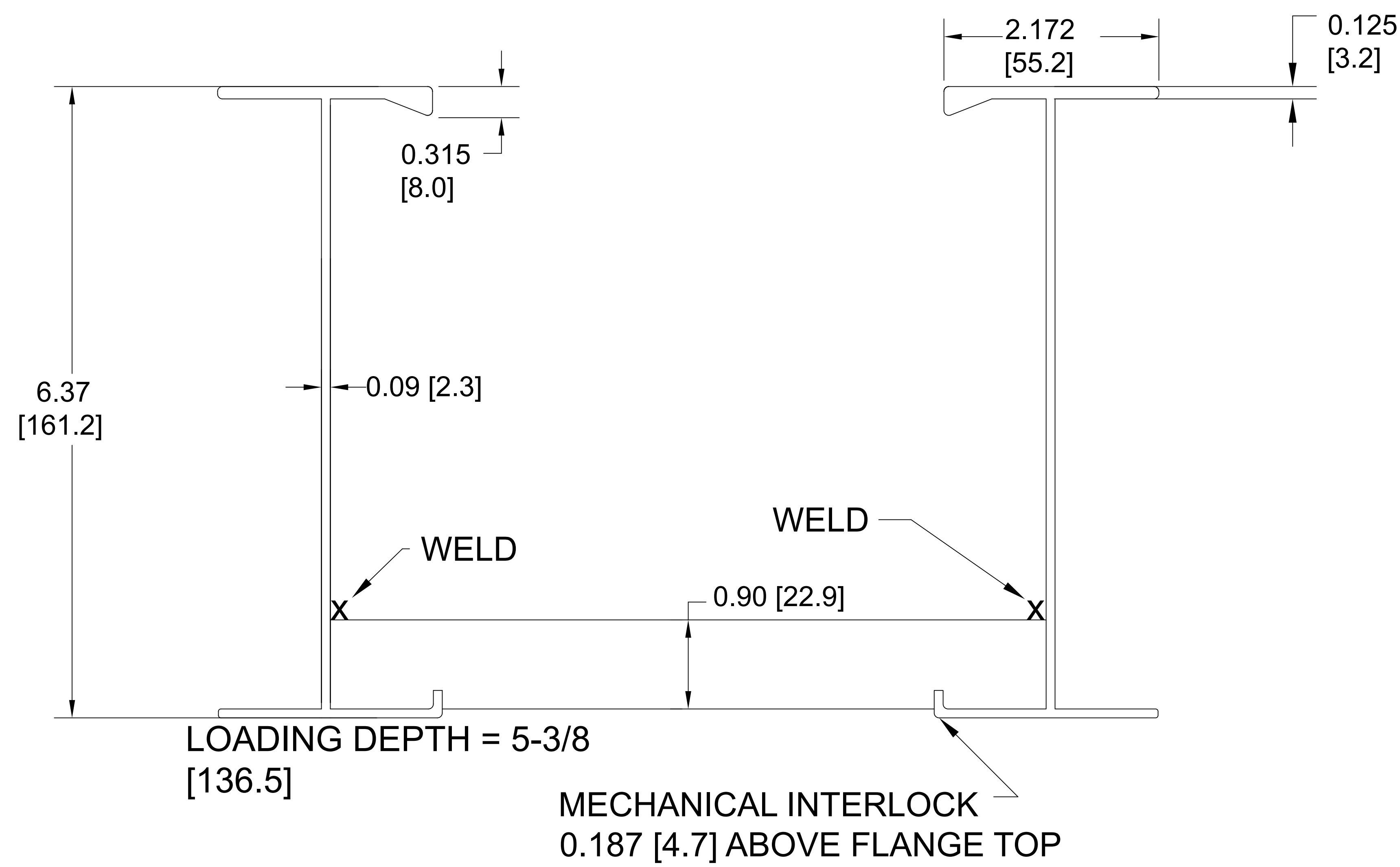


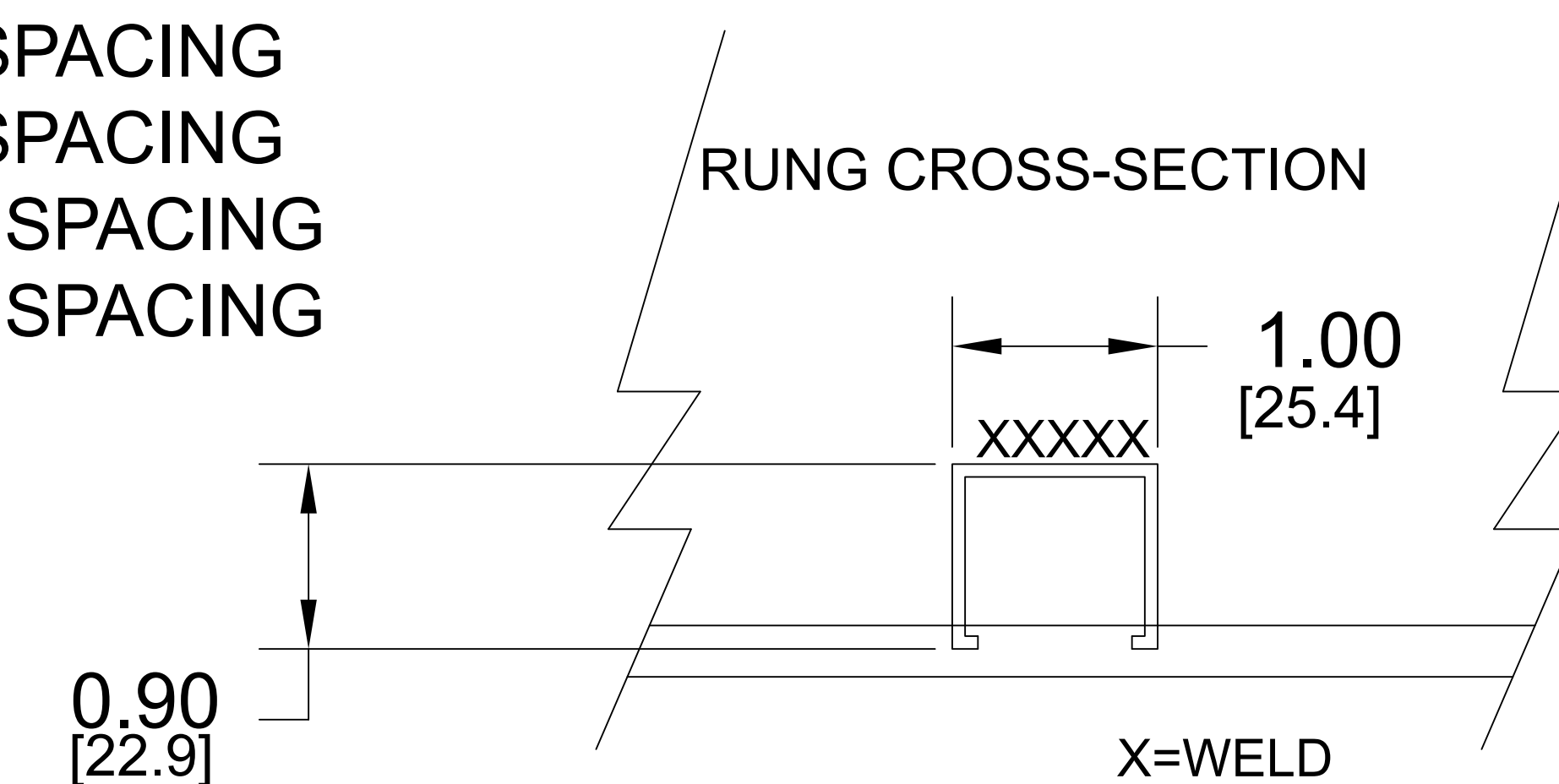
46A ALUMINUM CABLE TRAY-- NEMA 20C



$I_x = 12.1 \text{ in.}^4$ $S_x = 4.55 \text{ in.}^3$ $UL \text{ AREA} = 2.11 \text{ in.}^2$ $EGC = 2000 \text{ AMPS}$
 Allowable Loads - Simple Beam Loads Data - (Factor of safety - 1.5)

Span	feet	12	14	16	18	20	24
	meters	3.66	4.27	4.88	5.49	6.10	7.32
Load	lbs/ft	288	212	162	128	104	70
	kg/m	428.5	315.5	241.1	190.5	154.8	104.2
Deflect.	in.	1.09	1.51	1.96	2.48	3.05	4.3
	mm.	27.7	38.4	49.8	63	77.5	109.2
** K-factor		.0038	.0071	.0121	.0194	.0296	.0614

- R=6 [152.4] SPACING
- R=9 [228.6] SPACING
- R=12 [304.8] SPACING
- R=18 [457.2] SPACING



#11170 Rung (.875" W X .9" H) Used from 6" to 18" width-except 18" W & 18" RS

#11174 Rung (1.0" W x .9" H) used at 24" W & 36" Widths

#11118 Rung (1.625" W x .9" H) used at 12" & 18" RS 30 & 36" width's

** K x W may be used to calculate deflection of lighter loads at indicated space above

Furnished with 4 Hole Splice Plate (pair) and 8, 9 TBN302 3/8" [9.5] Round head serrated neck stainless bolt & integral lock washer nut assemblies.

*** MATERIAL**
A= 6063-T6
ALUM ALLOY

This drawing and specifications are the property of Chalfant Inc. and shall not be used for basis of mfg. or sale or quotation of illustrated product without permission.

Chalfant Brunswick, OH Tel. 330-273-3510 Fax 330-273-8149

SIZE	FSCM NO.	DWG NO.	REV
		46A "W" 010- "R"	
SCALE	SHEET		