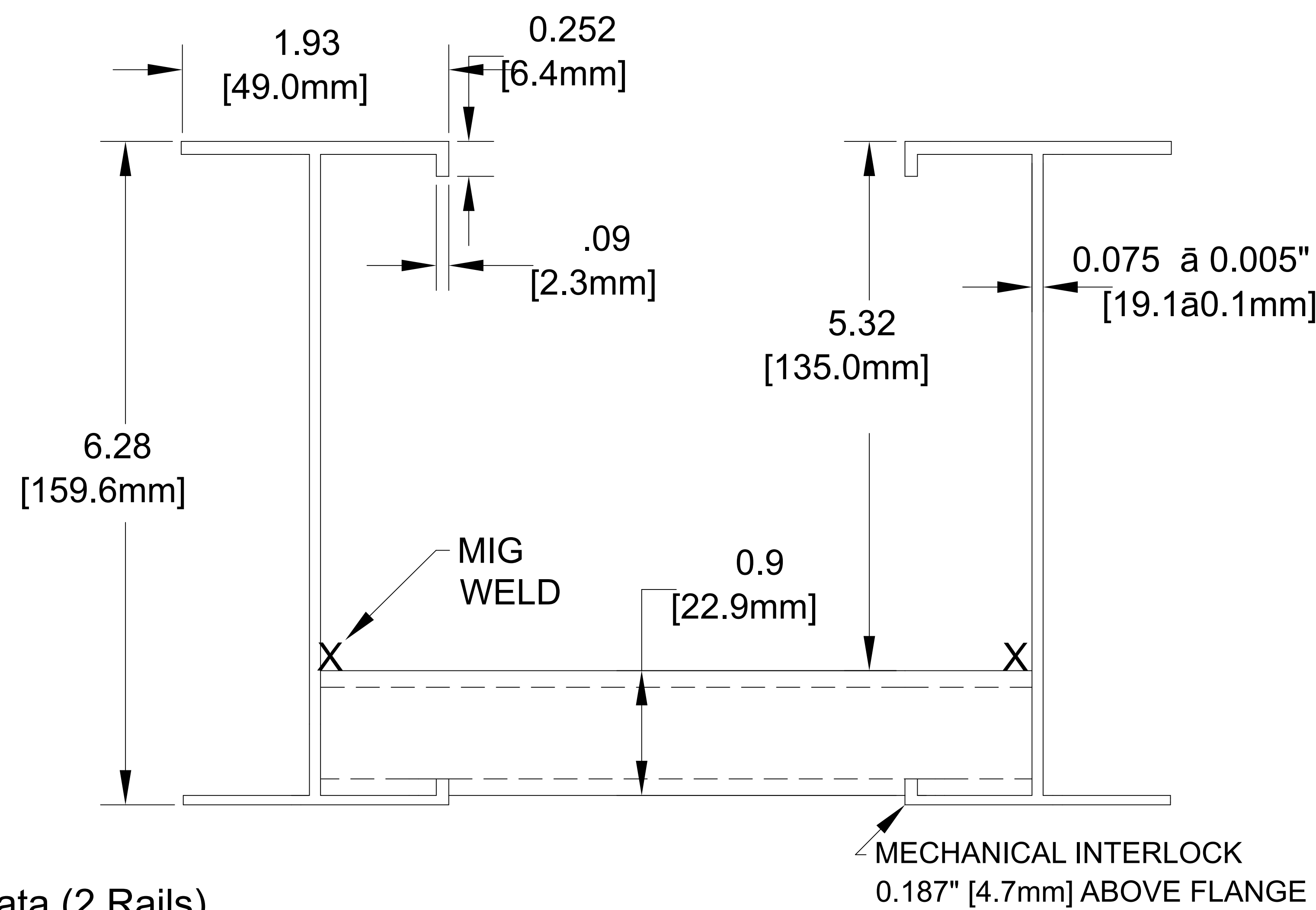


26A ALUMINUM CABLE TRAY --NEMA 20A, 16B

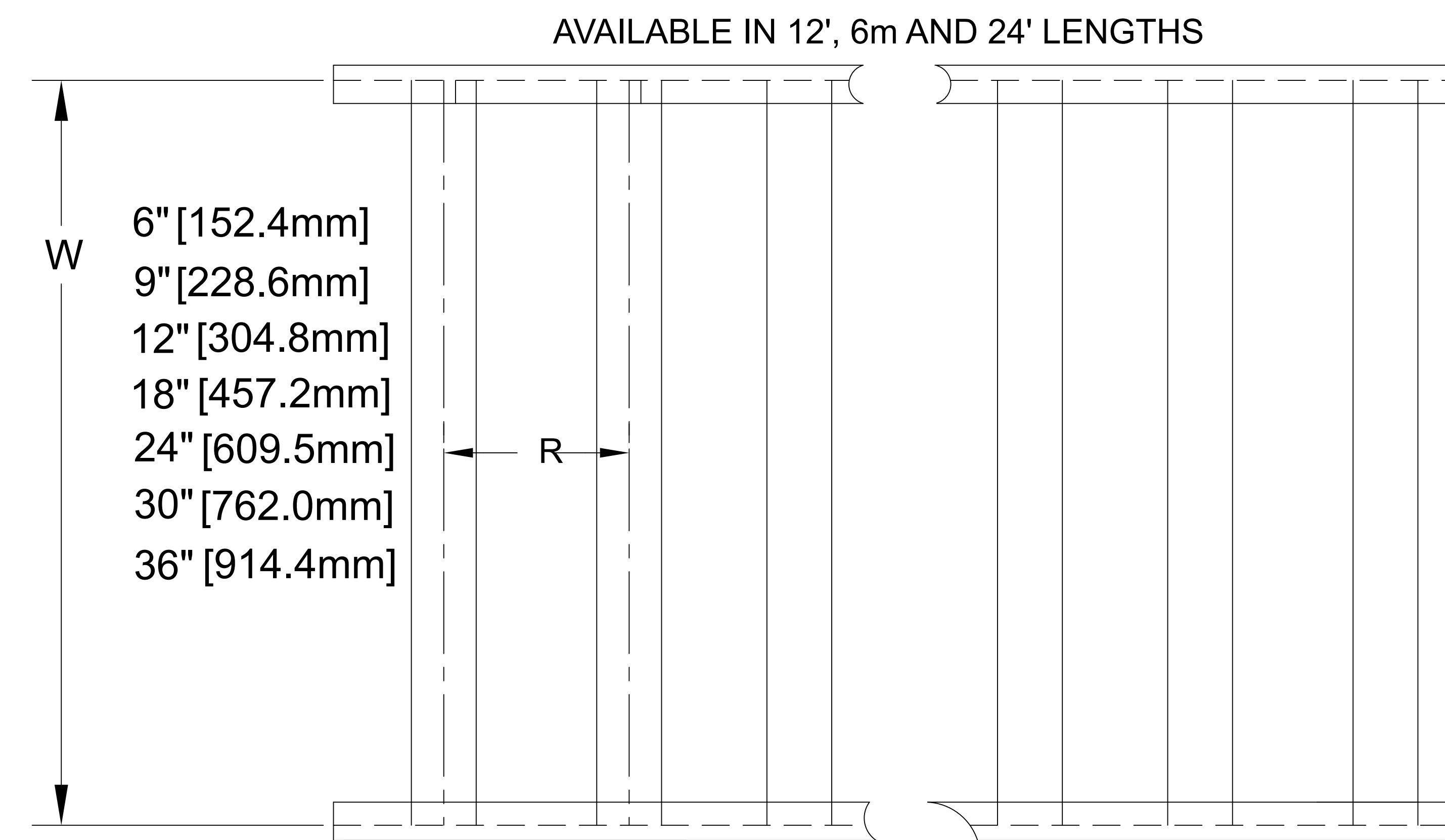


Data (2 Rails)
 $I_x = 8.55 \text{ in.}^4$ $S_x = 2.72 \text{ in.}^3$ $UL \text{ AREA} = 1.55 \text{ in.}^2$ $EGC =$
 1600 AMPS
 Allowable Loads - Simple Beam Loads Data - (Factor of safety - 1.5)

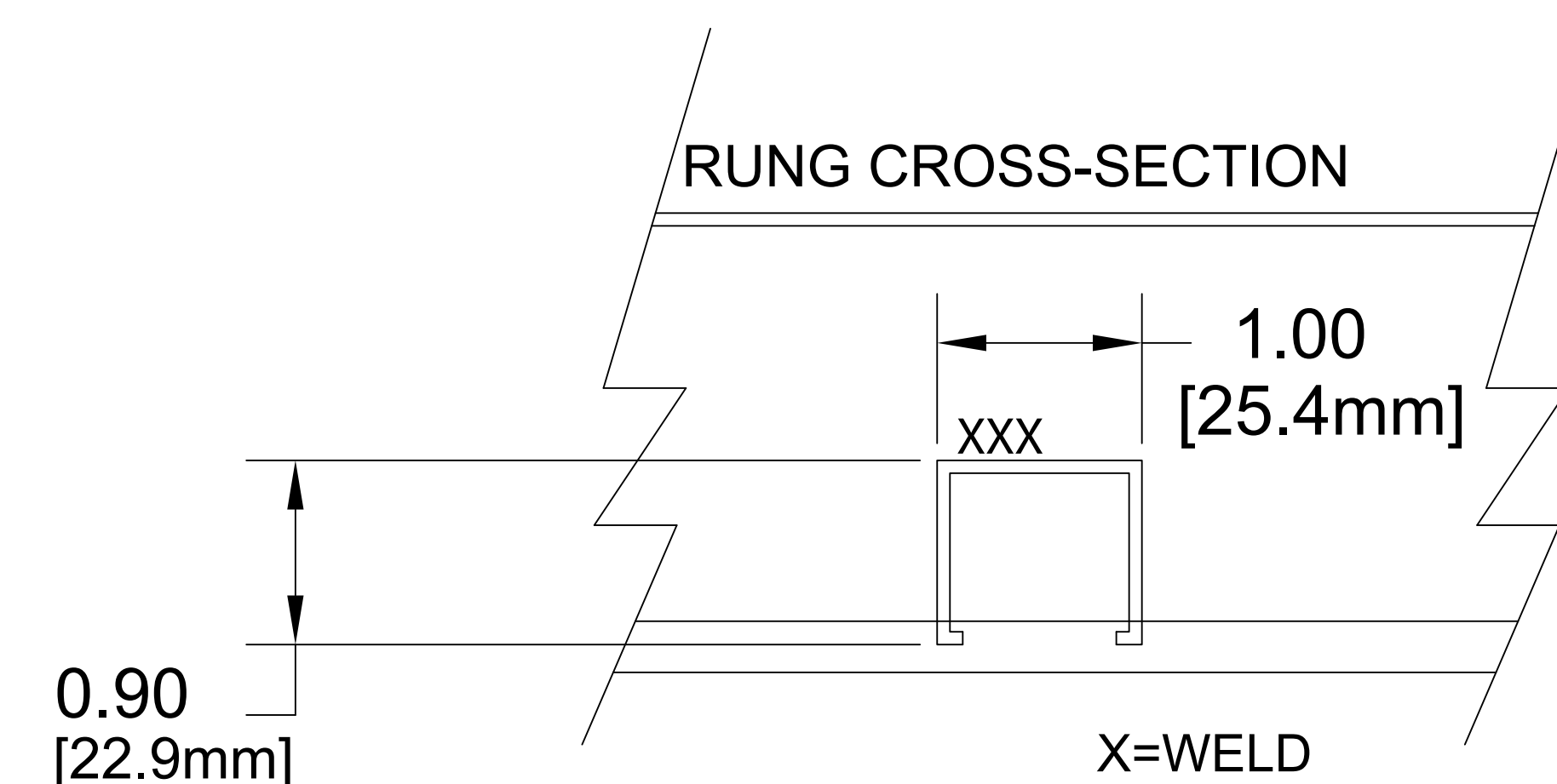
Span	feet	10	12	14	16	18	20
	meters	3.05	3.66	4.27	4.88	5.49	6.10
Load	lbs/ft	220	152	112	85	67	55
	kg/m	327.4	226.2	166.6	126.5	99.7	81.8
Deflect.	in.	0.57	0.84	1.13	1.46	1.87	2.31
	mm.	14.5	21.3	28.7	37.1	47.5	58.7
**	K-factor	.0026	.0055	.0101	.0172	.0761	.0420

** K x W may be used to calculate deflection of lighter loads at indicated space above

Furnished with 4 Hole Splice Plate (pair)
 and 8, 9 TBN302 3/8" Round head serrated neck
 stainless bolt & integral lock washer nut assemblies.



R=6" [152.4mm] SPACING
 R=9" [228.6mm] SPACING
 R=12" [304.8mm] SPACING
 R=18" [457.2mm] SPACING



#11170 Rung (.875" W X .9" H) Used from 6" to 18" width

#11174 Rung (1.0" W x .9" H) used at 24" W thru 36" Widths

#11118 Rung (1.625" W x .9" H) used at 12" & 18" RS for 30" & 36" width's

Notes: 1. Sheet Metal tolerances 2. Unless noted all dimensions are in inches

MATERIAL:
ALUM ALLOY
6063-T6

This drawing and specifications are the property of Chalfant Inc. and shall not be used for the basis of mfg. or sale or quotation of illustrated product without permission.

Chalfant Brunswick OH

Tel. 330-273-3510
 Fax 330-273-8149

SIZE A	FSCM NO.	DWG NO. 26A "W" 010-"R"	REV
SCALE	SHEET		