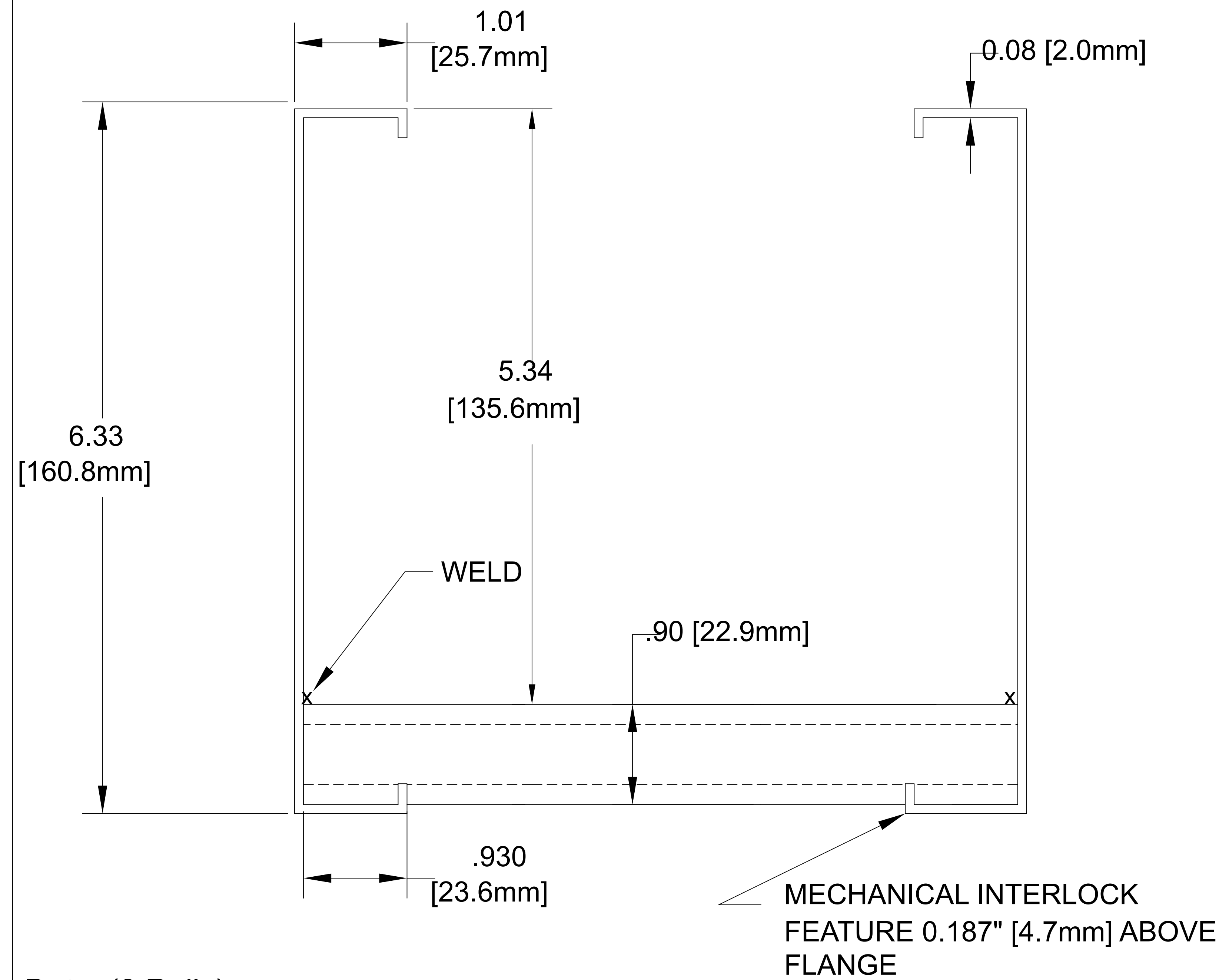


# 29A ALUMINUM CABLE TRAY --NEMA 16A, 12C CSA D

1 @ 3m



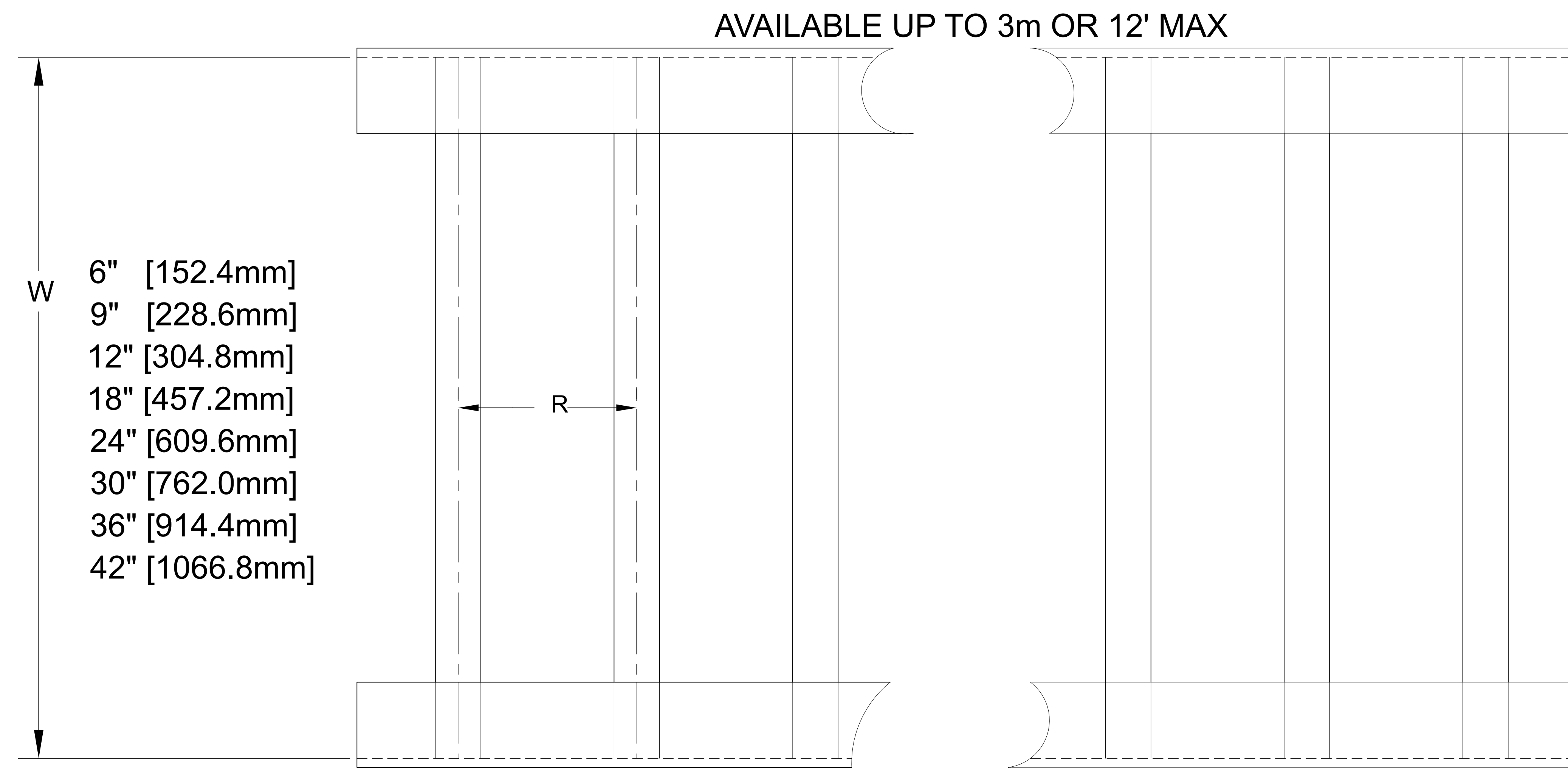
Data (2 Rails)  
 $I_x = 6.53 \text{ in.}^4$     $S_x = 2.0 \text{ in.}^3$     $UL \text{ AREA} = 1.28 \text{ in.}^2$   
 EGC = 1200 AMPS

Allowable Loads-Simple Beam Loads Data-(Factor of

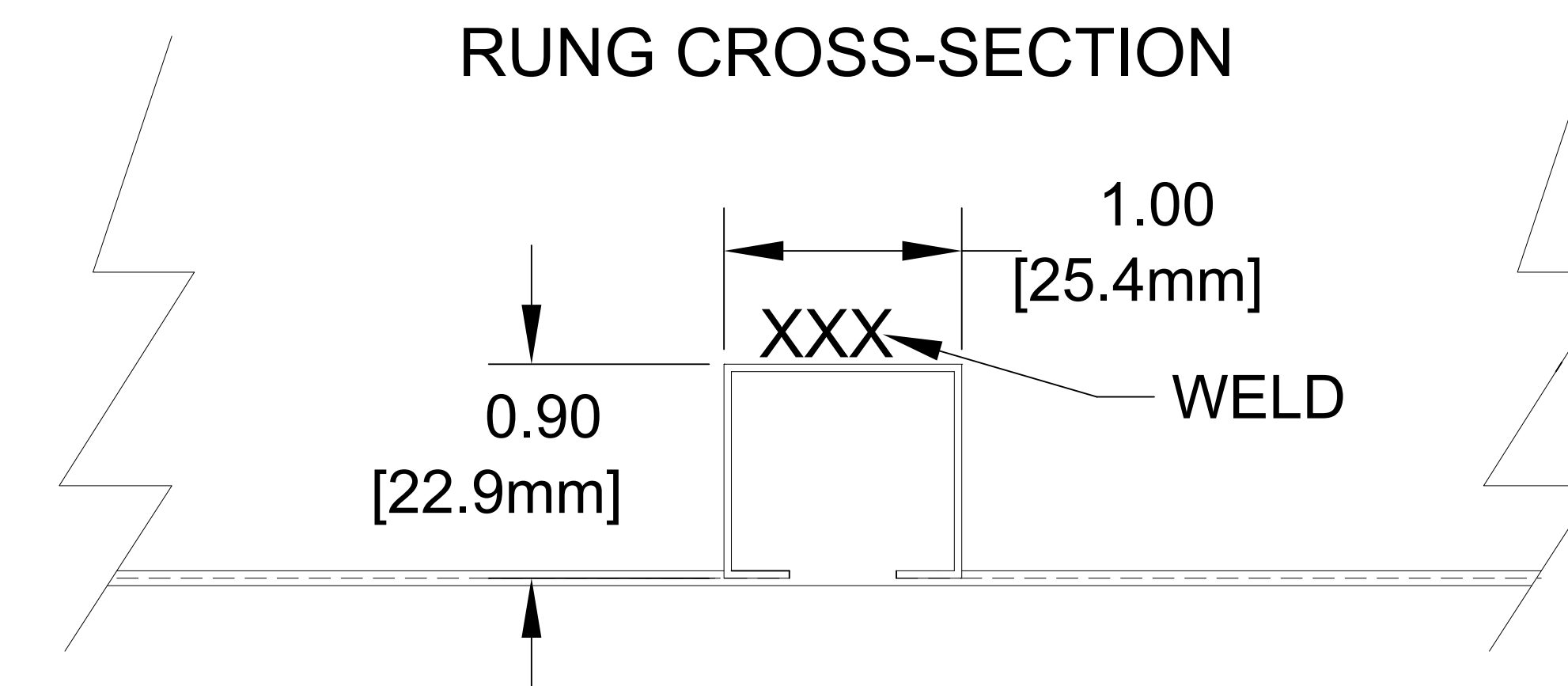
| Span        | feet   | 8     | 10    | 12    | 14    | 16    |
|-------------|--------|-------|-------|-------|-------|-------|
|             | meters | 2.44  | 3.04  | 3.66  | 4.27  | 4.88  |
| Load        | lbs/ft | 264   | 170   | 121   | 85    | 64    |
|             | kg/m   | 393   | 253   | 180   | 127   | 95    |
| Deflect.    | in.    | .37   | .73   | 1.08  | 1.35  | 1.45  |
|             | mm.    | 9.398 | 18.54 | 27.43 | 34.29 | 36.83 |
| ** K-factor |        | .0014 | .0043 | .0089 | .0160 | .0226 |

\*\*K x W may be used to calculate deflection of lighter loads at indicated spans above.

Furnished with 4 Hole Splice Plates (pair) and 8, 9TBN302 3/8" Round head serrated stainless steel bolt & integral lock washer nut assemblies.



R=6" [152.4 mm] SPACING  
 R=9" [228.6mm] SPACING  
 R=12" [304.8mm] SPACING  
 R=18" [457.2mm] SPACING



RUNG #11174 (SHOWN) 24" TO 36" TRAY ALL RUNG SPACINGS

RUNG # 11170 (.825 X .9) USED FOR 6" THRU 18" WIDTHS

RUNG # 11118 (1.625 X .9" ) USED AT 12" & 18" RS FOR 30" & 36" WIDTHS

Notes: 1. Sheet Metal tolerances 2. Unless noted all dimensions are in inches

**Material:**  
**ALUM ALLOY**  
**6063-T6**

This drawing and specifications are the property of Chalfant Inc. and shall not be used for the basis of mfg. or sale or quotation of illustrated product without permission.

**Chalfant Cleveland, OH** Tel. 216-521-7922 Fax 216-521-9922

|          |            |                         |       |
|----------|------------|-------------------------|-------|
| SIZE     | FSCM NO.   | DWG NO.                 | REV   |
| <b>A</b> |            | <b>29A "W" 010- "R"</b> |       |
| SCALE    | <b>NTS</b> |                         | SHEET |