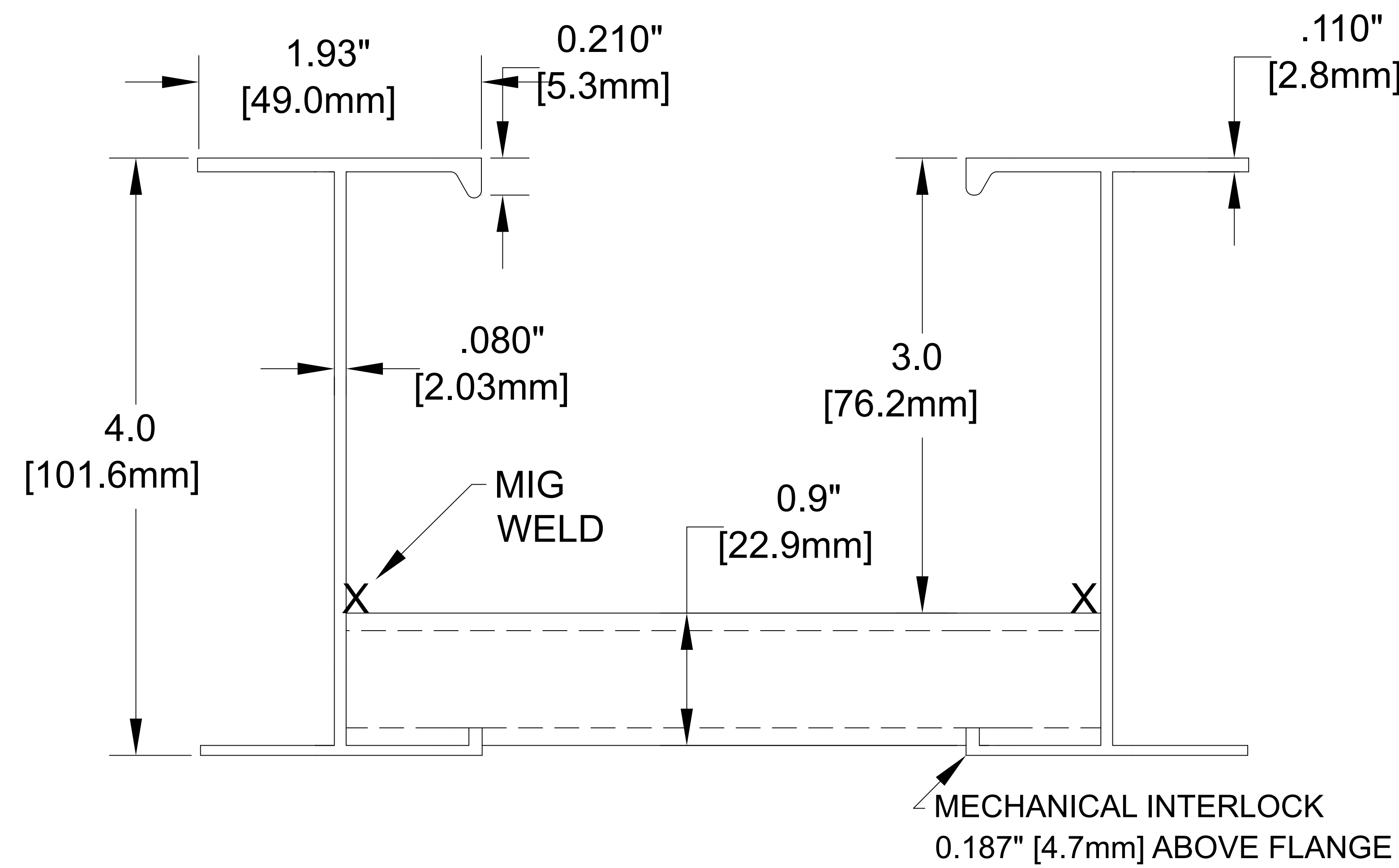


34A ALUMINUM CABLE TRAY--NEMA 20A, 16B



Data (2 Rails)

$I_x = 3.74 \text{ in.}^4$ $S_x = 2.07 \text{ in.}^3$ $UL \text{ AREA} = 1.43 \text{ in.}^2$ $EGC = 1200 \text{ AMPS}$

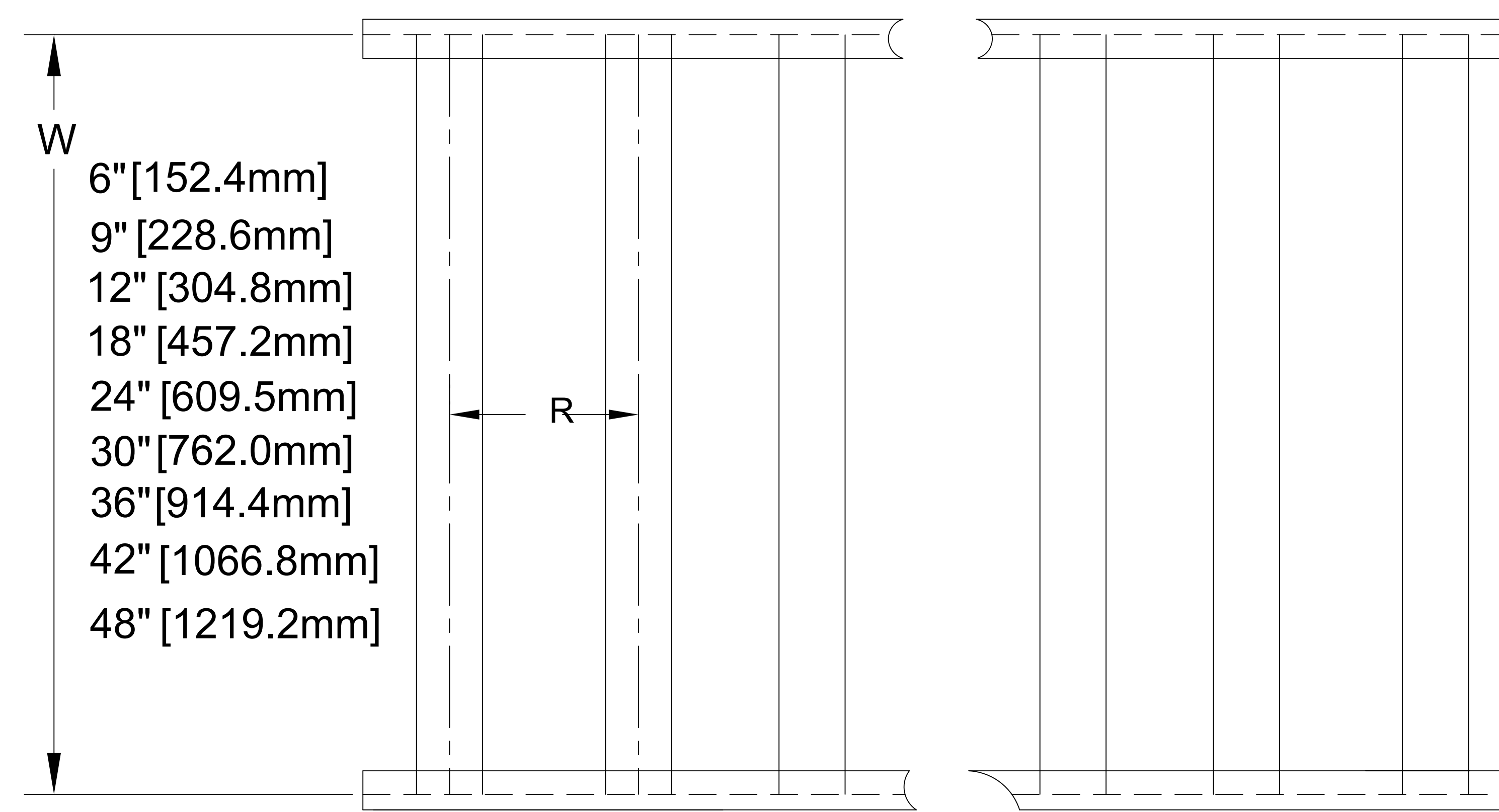
Allowable Loads - Simple Beam Loads Data - (Factor of safety - 1.5)

Span	feet	10	12	14	16	18	20
	meters	3.05	3.66	4.27	4.88	5.49	6.10
Load	lbs/ft	220	152	112	86	67	55
	kg/m	327.4	226.2	166.6	126.5	99.7	81.8
Deflect.	in.	1.33	1.91	2.60	3.39	4.30	5.30
	mm.	14.5	21.3	28.7	37.1	47.5	58.7
**	K-factor	.0060	.0124	.0231	.0394	.0632	.0963

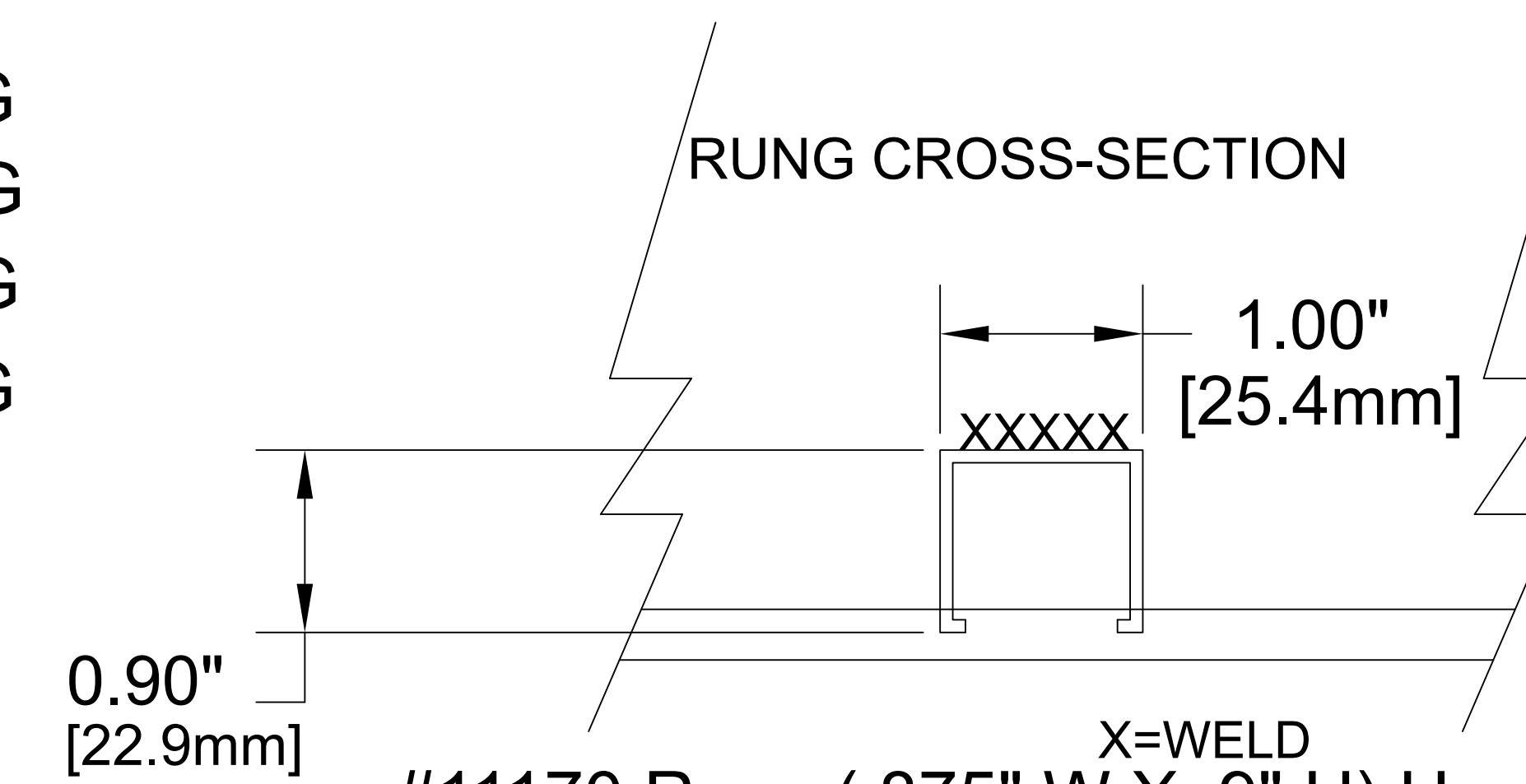
** K x W may be used to calculate deflection of lighter loads at indicated space above

Furnished with 4 Hole Splice Plate (pair) and 8, 9 TBN302 3/8" Round head serrated neck stainless bolt & integral lock washer nut assemblies.

AVAILABLE IN 12', 6m AND 24' LENGTHS



R=6" [152.4mm] RUNG SPACING
 R=9" [228.6mm] RUNG SPACING
 R=12" [304.8mm] RUNG SPACING
 R=18" [457.2mm] RUNG SPACING



#11170 Rung (.875" W X .9" H) Used from 6" thru 18" width
 #11174 Rung (1.0" W x .9" H) used at 24" W thru 36" Widths
 #11118 Rung (1.625" W x .9" H) used at 12" & 18" RS 30 & 36" width's

Notes: 1. Sheet Metal tolerances 2. Unless noted all dimensions are in inches

Material
ALUM ALLOY
6063-T6

This drawing and specifications are the property of Chalfant Inc. and shall not be used for the basis of mfg. or sale or quotation of illustrated product without permission.

Chalfant Brunswick, OH

Tel. 330-273-3510
 Fax 330-273-8149

SIZE	FSCM NO.	DWG NO.	REV
A		34A "W" 010-"R"	
SCALE	SHEET		