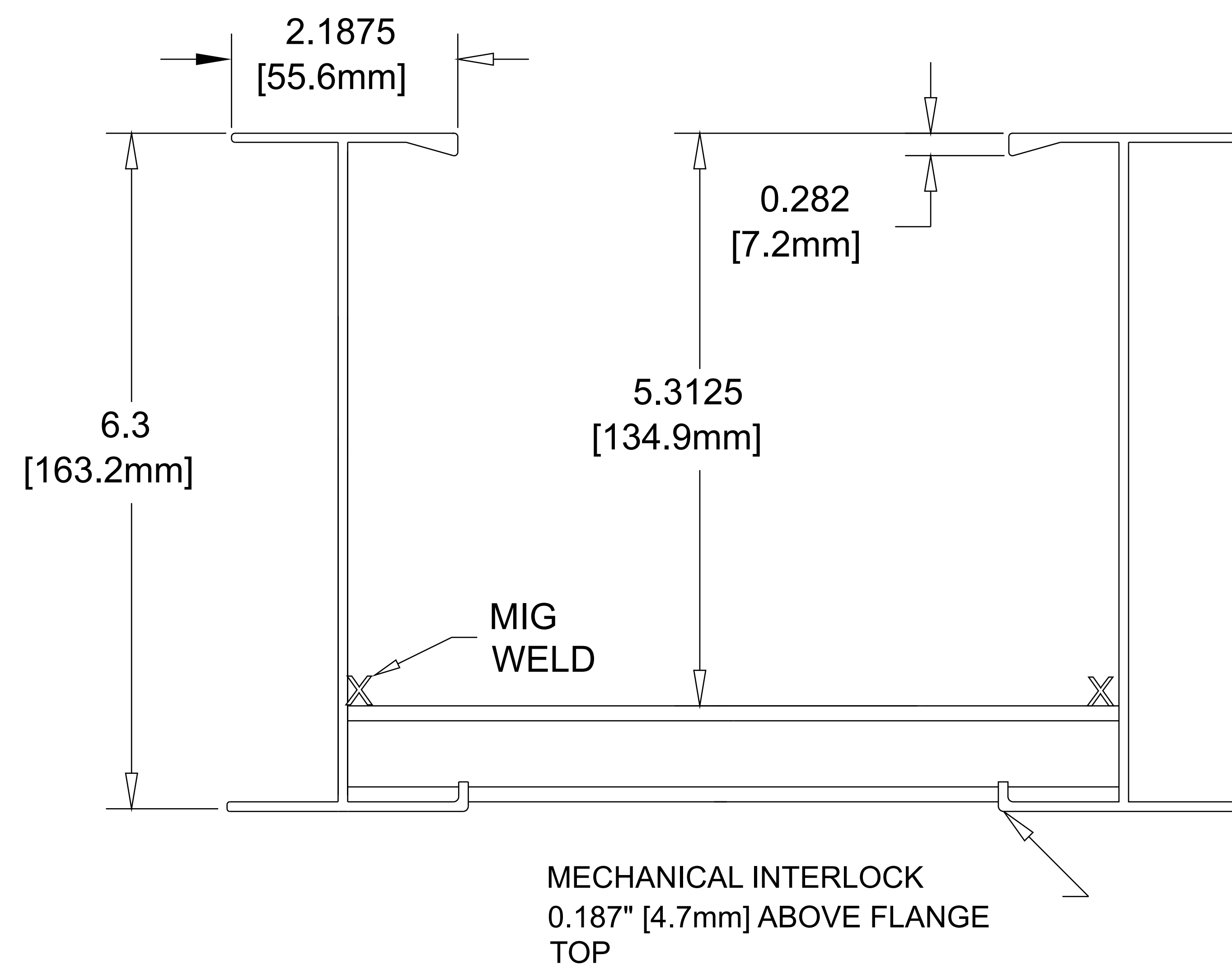


3A ALUMINUM CABLE TRAY

-NEMA 20B--CSA E

1 @ 6m



Data (2 Rails)

$I_x = 10.4 \text{ in.}^4$ $S_x = 3.81 \text{ in.}^3$ $UL \text{ AREA} = 1.84 \text{ in.}^2$ $EGC = 1600 \text{ AMPS}$

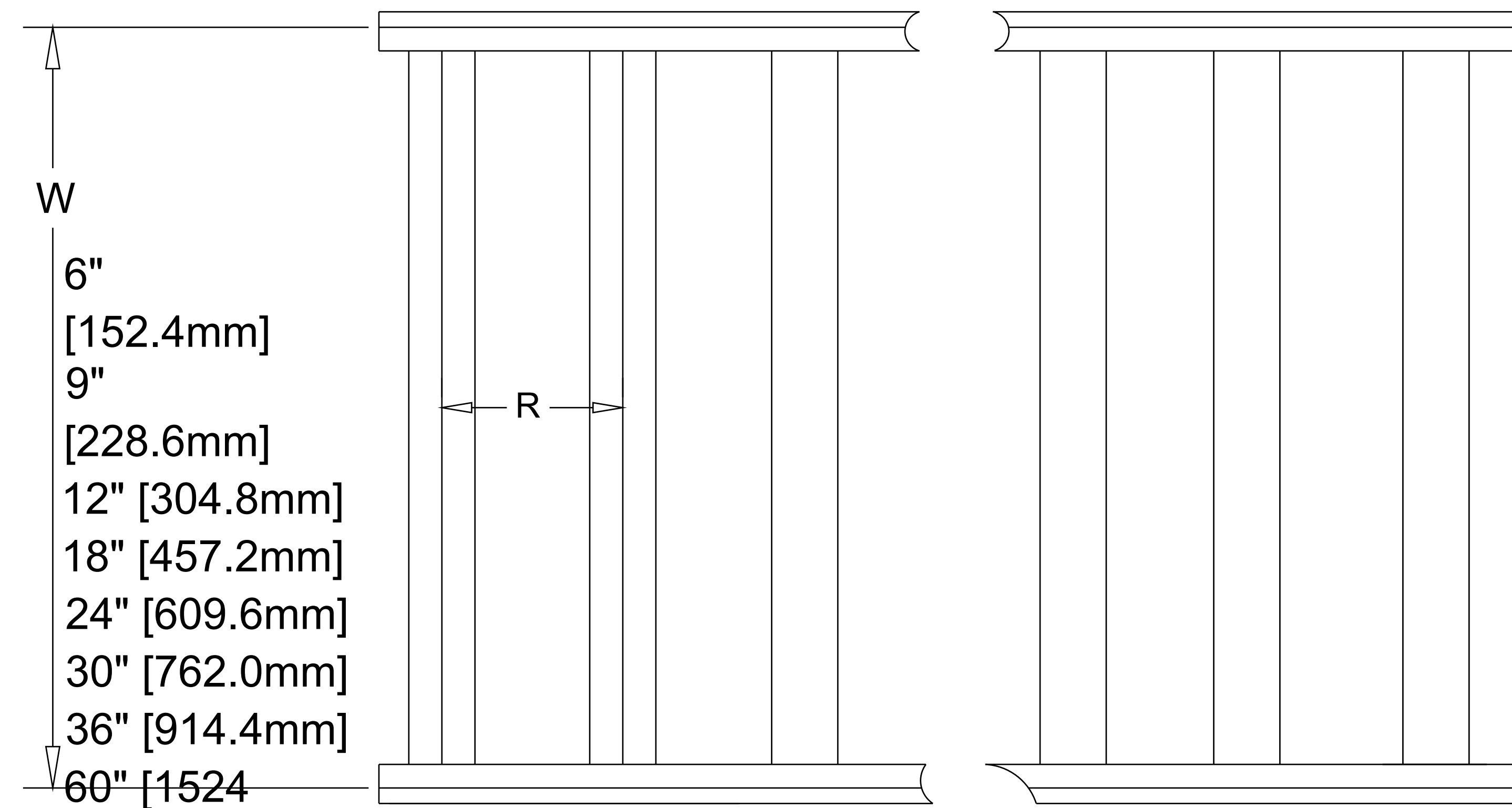
Allowable Loads - Simple Beam Loads Data - (Factor of safety - 1.5)

Span	feet	12	14	16	18	20
	meters	3.66	4.27	4.88	5.49	6.10
Load	lbs/ft	211	155	119	94	76
	kg/m	313.9	230.6	177.0	139.8	113.0
Deflect.	in.	.95	1.28	1.67	2.12	2.62
	mm.	24.1	32.5	42.4	53.8	66.5
**	K-factor	.0045	.0083	.0141	.0226	.0345

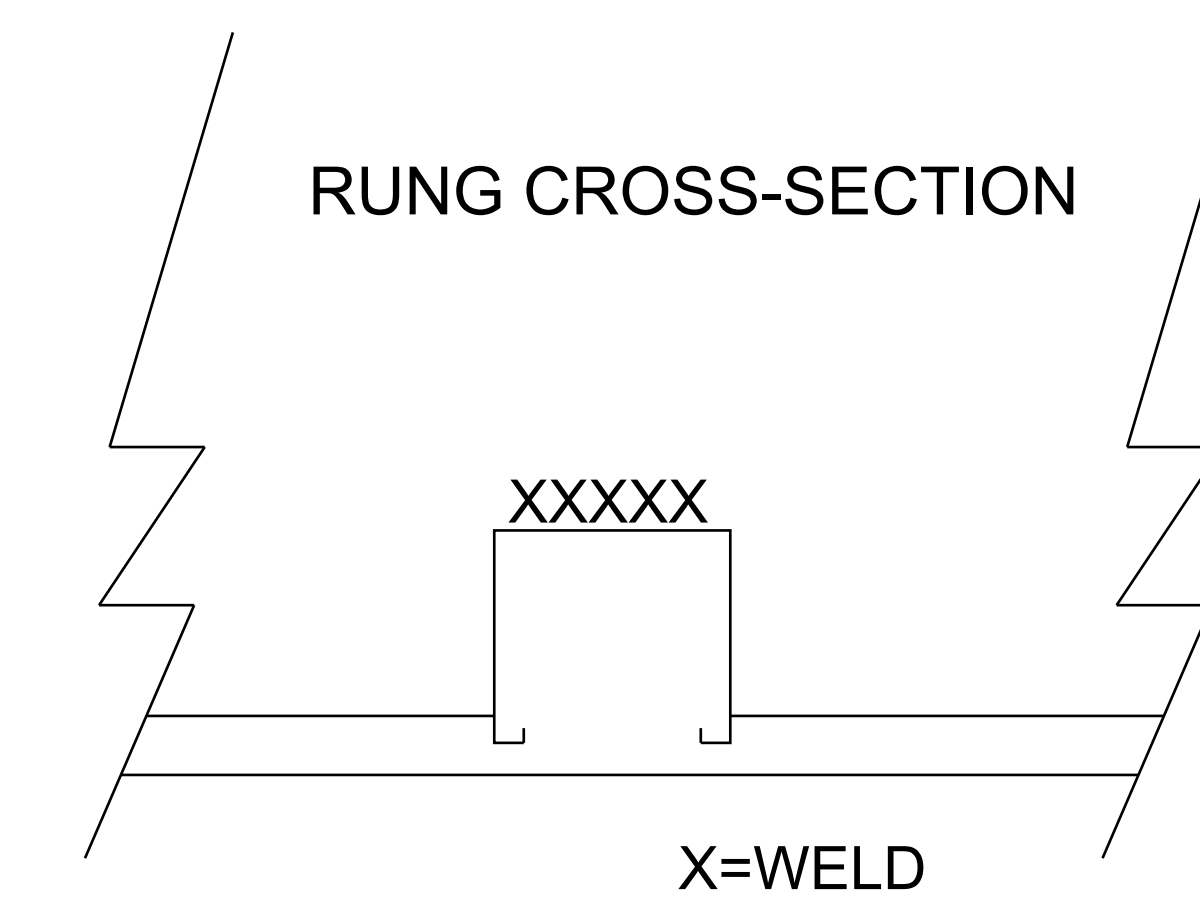
** K x W may be used to calculate deflection of lighter loads at indicated space above

Furnished with 4 Hole Splice Plate (pair) and 8, 9 TBN302 3/8" Round head serrated stainless bolt & integral lock washer nut assemblies.

AVAILABLE IN 12', 6M AND 24' LENGTHS



- 6" [152.4mm]
- 9" [228.6mm]
- 12" [304.8mm]
- 18" [457.2mm]
- 24" [609.6mm]
- 30" [762.0mm]
- 36" [914.4mm]
- 60" [1524 mm]



#11170 Rung (.875" W X .9" H) Used from 6" to 18" width

#11174 Rung (1.0" W x .9" H) used at 24" W thru 36" widths

#11118 Rung (1.625" W x .9" H) used at 12" & 18" RS 30 & 36" width's

Material
ALUM ALLOY
6063-T6

This drawing and specifications are the property of Chalfant Inc. and shall not be used for the basis of mfg. or sale or quotation of illustrated product without permission.

Chalfant Cleveland, OH Tel. 216-521-7922 Fax 216-521-9922

SIZE	FSCM NO.	DWG NO.	REV
A		3A "W" 010-"T"	
SCALE	SHEET		