

Ladder Tray

Dimensions:

Heights from 2" (45mm) - 10" (254mm)
Widths from 6" (150mm) - 48" (1219mm)
Lengths 10 (3M), 12' (3.6M), 20' (6M)
24' (7.3M), 30' (9.1M), 40' (12.2M)

Finishes / Material:

Aluminum
Strip Galvanized (Mill Galvanized)
Hot-Dipped Galvanized
Stainless Steel 304*
Stainless Steel 316*
Powder Coated

* Select Sizes

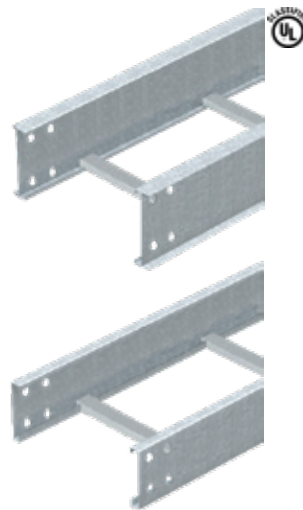
Features:

Built to NEMA Specifications.
Different side rail designs for light, heavy duty and wide span applications.

Accessories:

Complete line of bends, T's, intersections, dividers, covers, connectors and blind ends.

Great for use in: Most locations including commercial and industrial with intermediate to long support spans.



GR-Magic Wire Mesh Tray

Self-Connecting - 6 inch side height is not self connecting

Dimensions:

Heights from 1" (35mm) - 6" (155mm)
Widths from 2" (50mm) - 24" (600mm)
Lengths 10' (3M)

Finishes:

Electro-Galvanized
Hot-Dipped Galvanized
Stainless Steel 304
Stainless Steel 316
Powder Coated

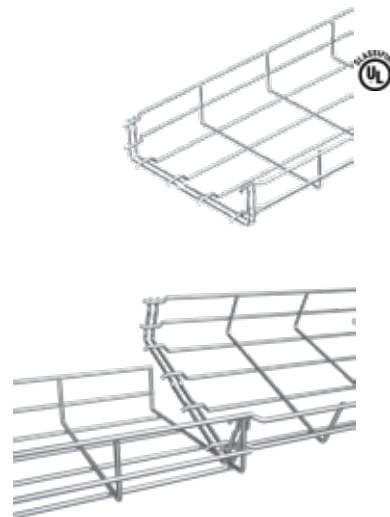
Features:

Self-Connecting GR-Magic requires no connection hardware.
Light weight, easy to install and modify in the field.

Accessories:

Complete line of support brackets and hardware including kits to create bends and intersections in the field.

Great for use in: Locations with low voltage, telecommunications and fiber optic cables on short spans.



RKS-Magic Trough Tray

Self-Connecting

Dimensions:

Heights from 1" (35mm) - 2" (60mm)
Widths from 2" (50mm) - 24" (600mm)
Lengths 10' (3M)

Finishes/Material:

Strip Galvanized (Mill Galvanized)
Hot-Dipped Galvanized
Stainless Steel 304
Stainless Steel 316
Powder Coated

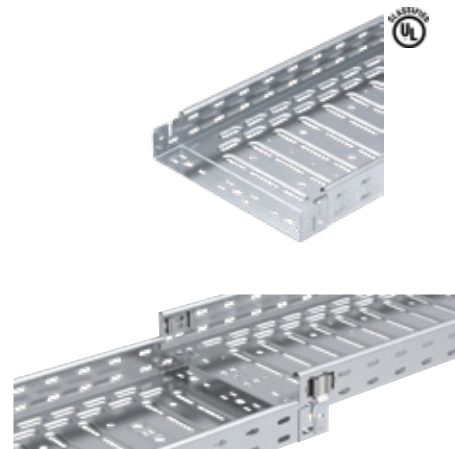
Features:

Self-Connecting RKSM Series requires no connection hardware.
Solid and ventilated styles.

Accessories:

Complete line of self-connecting bends, T's, intersections, dividers, covers, connectors and blind ends.

Great for use in: Locations where protecting cables and maintaining aesthetic is important.



BKRS- Walkable Tray

Dimensions:

Height 4" (110mm)
Widths from 4" (100mm) - 24" (600mm)
Length 10' (3M)

Finishes/Material:

Aluminum (Checker Plate Covers)
Strip Galvanized (Mill Galvanized)

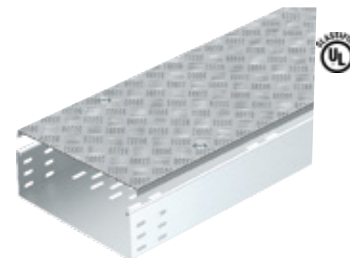
Features:

Tray and cover system designed to support heavy loads, stamping feet and more.

Accessories:

Floor mount supports, connectors, dividers and dust protection.

Great for use in: Industrial and automation locations, where cables are more efficiently run across the floor.



Series 6 Trough Tray

Dimensions:

Heights from 3" (76mm) - 6" (152mm)
Widths from 6" (152mm) - 24" (610mm)
Lengths 12' (3.6M)

Finishes:

Aluminum
Hot-Dipped Galvanized
Strip Galvanized (Mill Galvanized)
Stainless Steel 304
Stainless Steel 316
Powder Coated

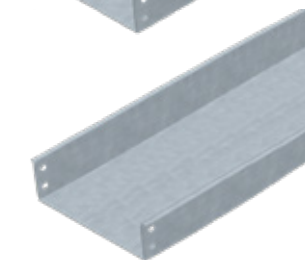
Features:

Built to NEMA Standards.
Light weight, solid and ventilated styles.

Accessories:

Complete line of bends, T's, intersections, dividers, covers, connectors and blind ends.

Great for use in: Locations where protecting cables and maintaining aesthetics is important.



Channel Tray

Dimensions:

Heights from 1.75" (45mm) - 2" (50mm)
Widths from 2" (50mm) - 12" (300mm)
Lengths 10' (3M) and 12' (3.6M)

Finishes/Material:

Aluminum
Strip Galvanized (Mill Galvanized)
Hot-Dipped Galvanized
Stainless Steel 304
Stainless Steel 316
Powder Coated

Features:

Openings of various sizes along the length of the tray allow for easy exit and entry of cables.
Special grommets available for each hole size.

Accessories:

Grommets, covers and connectors. Bends for select sizes.

Great for use in: Locations with multiple exit and entry points feeding from or two a main run.

