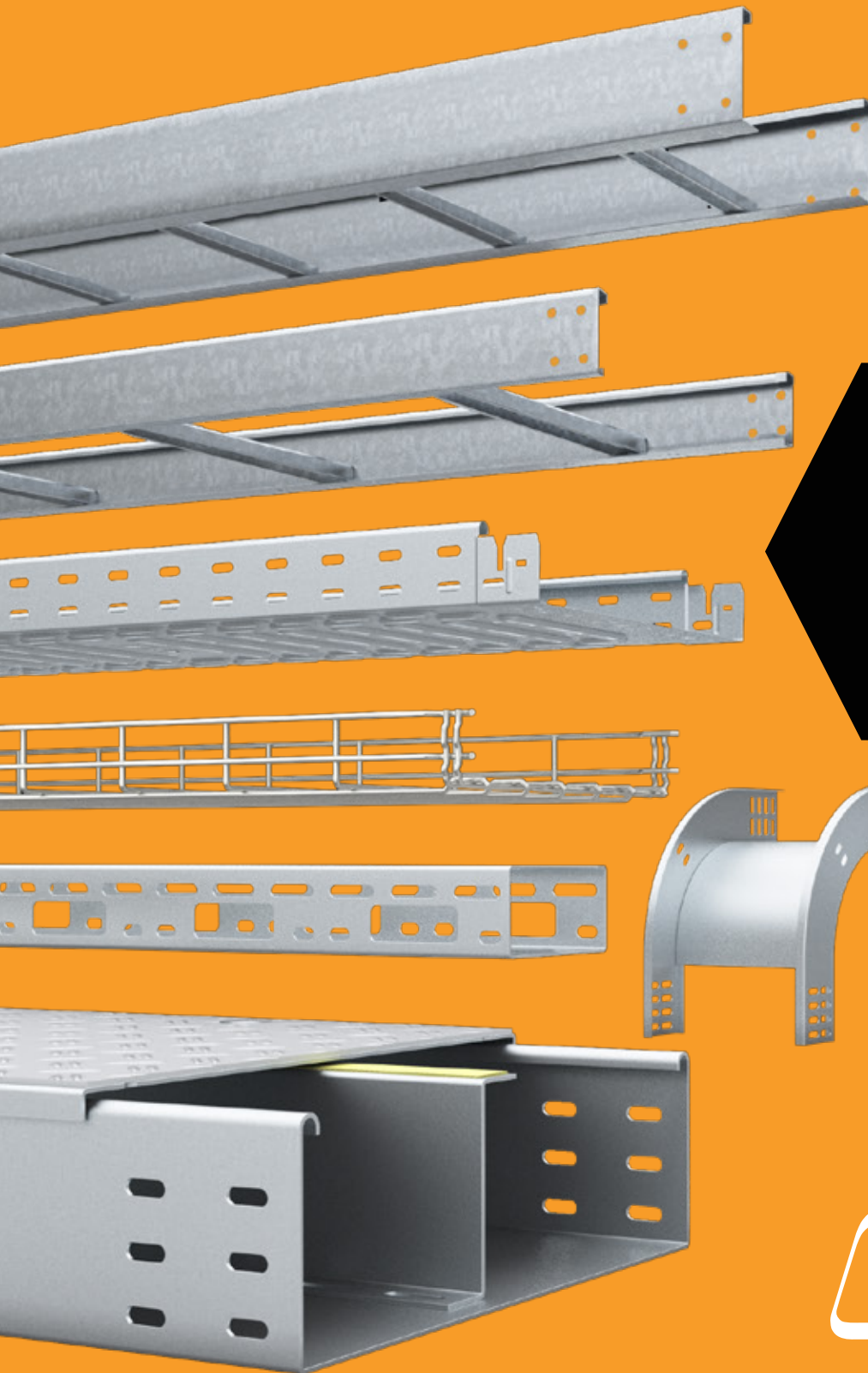


Cable Tray Systems



Discover our
complete cable
tray offering

CHALFANT

OBO Bettermann Group



Wire Mesh Tray

Dimensions:

Heights from 1" (35mm) - 6" (155mm)

Widths from 2" (50mm) - 24" (600mm)

Lengths 10' (3M)

Finishes:

Electro-Galvanized

Hot-Dipped Galvanized

Stainless Steel 304

Stainless Steel 316

Features:

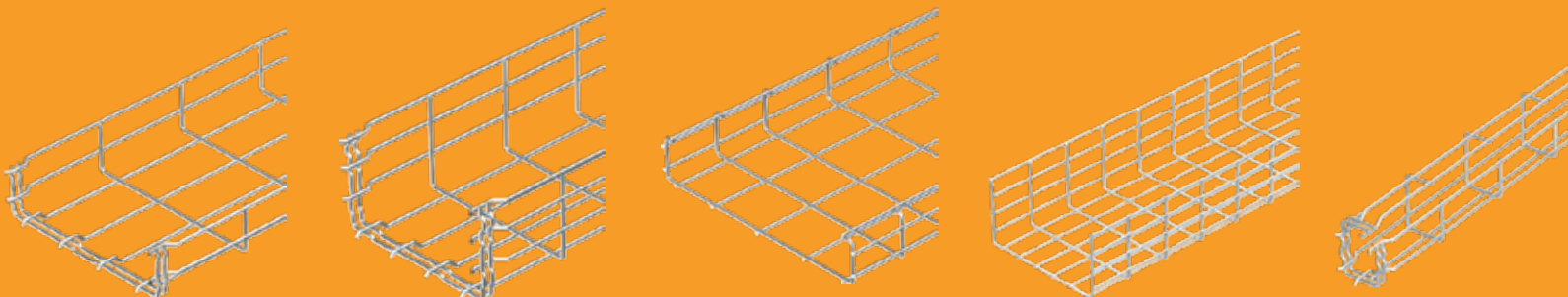
Self-Connecting GR-Magic requires no connection hardware

Light weight, easy to install and modify in the field.



Accessories:

Complete line of bends, T's, intersections, dividers, covers, connectors and blind ends.





Ladder Tray

Dimensions:

Heights from 2" (45mm) - 10" (254mm)

Widths from 6" (150mm) - 42" (1000mm)

Lengths 10' (3M) - 20' (6M)

Finishes / Material:

Alumnium

Strip Galvanized (Mill Galvanized)

Hot-Dipped Galvanized

Stainless Steel 304*

Stainless Steel 316*

* Select Sizes

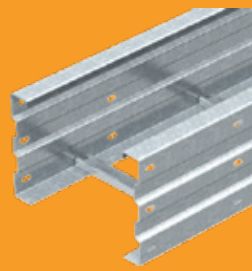
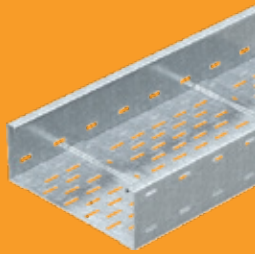
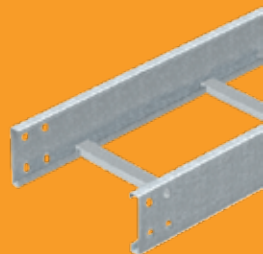
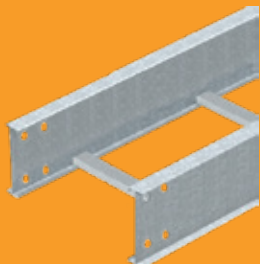
Features:

Built to NEMA Specifications.

Different side rail designs for light, heavy duty and wide span applications

Accessories:

Complete line of bends, T's, intersections, dividers, covers, connectors and blind ends.



1-330-273-3510

www.chalfant-obo.com

sales@chalfant-obo.com



Trough Tray

Dimensions:

Heights from 1" (35mm) - 6" (150mm)

Widths from 2" (50mm) - 24" (600mm)

Lengths 10' (3M)

Finishes/Material:

Aluminum

Strip Galvanized (Mill Galvanized)

Hot-Dipped Galvanized

Stainless Steel 304

Stainless Steel 316

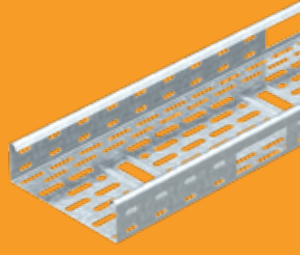
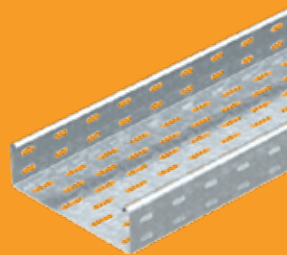
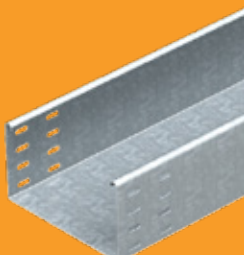
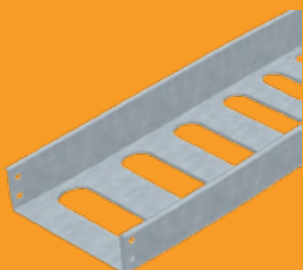
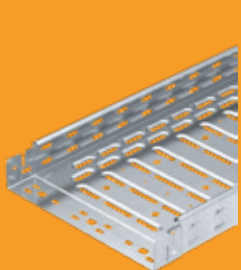
Features:

Self-Connecting RKSM Series. Solid and ventilated styles



Accessories:

Complete line of bends, T's, intersections, dividers, covers, connectors and blind ends.



www.chalfant-obo.com



Channel Tray

Dimensions:

Heights from 1.75" (45mm) - 2" (50mm)

Widths from 2" (50mm) - 12" (300mm)

Lengths 10' (3M)

Finishes/ Material:

Aluminum

Electro-Galvanized

Hot-Dipped Galvanized

Strip Galvanized (Mill Galvanized)

Stainless Steel 304

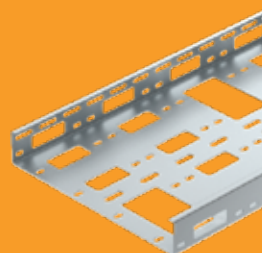
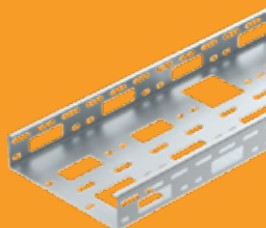
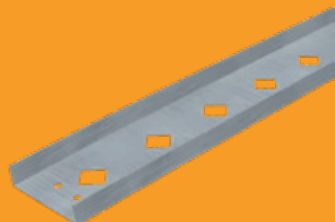
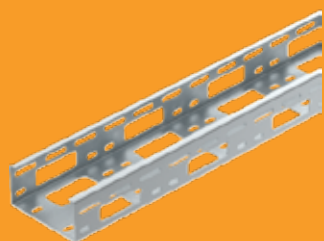
Stainless Steel 316

Features:

Openings of various sizes along the length of the tray allow for easy exit and entry of cables. Special grommets available for each hole size.

Accessories:

Grommets, covers and connectors. Bends for select sizes





Walkable Tray

Dimensions:

Height 4" (110mm)

Widths from 4" (100mm) - 24" (600mm)

Length 10' (3M)

Finishes/Material:

Aluminum (Checker Plate Covers)

Strip Galvanized (Mill Galvanized)

Features:

Tray and cover system designed to support heavy loads, stamping feet and more

Accessories:

Floor mount supports, connectors, dividers and dust protection

