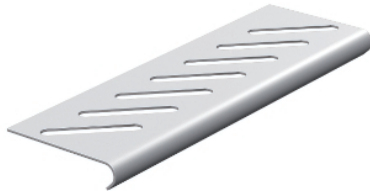
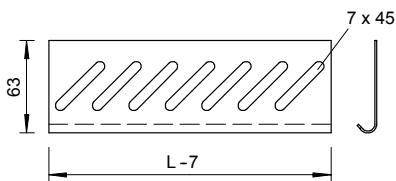


Bottom end plate



Dimensions



For fastening, please order screws, type FR5B M6x12, separately.
Bottom end plate for floor reinforcement at the ends of the cable tray and as cable protection.

Type	Width mm	Pack. pcs	Weight kg/100 pcs.	Item No.
BEB 100 FS	100	100	5,400	7083106
BEB 150 FS	150	100	8,400	7083157
BEB 200 FS	200	100	11,400	7083203
BEB 300 FS	300	100	17,200	7083300
BEB 400 FS	400	100	23,100	7083408
BEB 500 FS	500	50	29,000	7083505
BEB 600 FS	600	50	35,000	7083602
BEB 100 DD	100	100	5,400	7083618
BEB 150 DD	150	100	8,400	7083622
BEB 200 DD	200	100	11,400	7083626
BEB 300 DD	300	100	17,200	7083630
BEB 400 DD	400	100	23,100	7083634
BEB 500 DD	500	50	29,000	7083638
BEB 600 DD	600	50	35,000	7083642
BEB 100 VA4301	100	100	5,400	7084013
BEB 150 VA4301	150	100	8,400	7084015
BEB 200 VA4301	200	100	11,400	7084048
BEB 300 VA4301	300	100	17,200	7084064
BEB 400 VA4301	400	100	23,100	7084080
BEB 500 VA4301	500	50	29,000	7084102
BEB 600 VA4301	600	50	35,000	7084129
BEB 100 VA4571	100	100	5,400	7084141
BEB 150 VA4571	150	100	8,400	7084142
BEB 200 VA4571	200	100	11,400	7084143
BEB 300 VA4571	300	100	17,200	7084145
BEB 400 VA4571	400	100	23,100	7084147
BEB 500 VA4571	500	50	29,000	7084149
BEB 600 VA4571	600	50	35,000	7084151

St Steel **V2A** Stainless steel, grade 304 **V4A** Stainless steel, grade 316 Ti

FS Strip-galvanised **DD** Strip galvanised zinc/aluminium, Double Dip