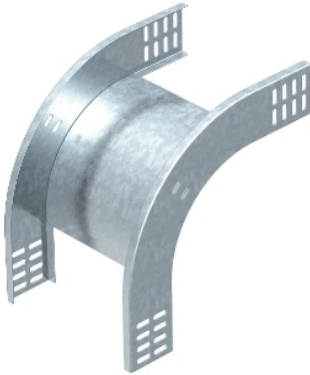
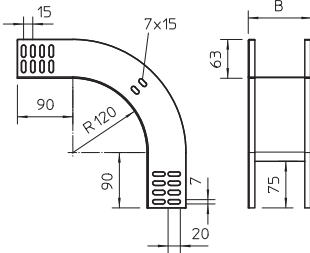


90° vertical bend, falling



Dimensions



The vertical bend is pushed over the end of the cable tray and screwed tight. Fastening materials should be ordered separately.

90° vertical bend, falling, for all cable tray types of 60 mm side height.

Type	Width mm	Pack. pcs	Weight kg/100 pcs.	Item No.
RBV 610 F FS	100	1	61,000	7007055
RBV 615 F FS	150	1	73,000	7007059
RBV 620 F FS	200	1	84,000	7007063
RBV 630 F FS	300	1	107,000	7007067
RBV 640 F FS	400	1	130,000	7007071
RBV 650 F FS	500	1	153,000	7007075
RBV 660 F FS	600	1	176,000	7007079
RBV 610 F FT	100	1	66,000	7007056
RBV 615 F FT	150	1	80,000	7007060
RBV 620 F FT	200	1	92,000	7007064
RBV 630 F FT	300	1	116,000	7007068
RBV 640 F FT	400	1	142,000	7007072
RBV 650 F FT	500	1	167,000	7007076
RBV 660 F FT	600	1	192,000	7007080
RBV 610 F VA4301	100	1	61,000	7007155
RBV 615 F VA4301	150	1	73,000	7007156
RBV 620 F VA4301	200	1	84,000	7007157
RBV 630 F VA4301	300	1	107,000	7007159
RBV 640 F VA4301	400	1	130,000	7007161
RBV 650 F VA4301	500	1	153,000	7007163
RBV 660 F VA4301	600	1	176,000	7007165
RBV 610 F VA4571	100	1	61,000	7006750
RBV 620 F VA4571	200	1	84,000	7006754
RBV 630 F VA4571	300	1	107,000	7006758
RBV 640 F VA4571	400	1	130,000	7006762
RBV 650 F VA4571	500	1	153,000	7006766
RBV 660 F VA4571	600	1	176,000	7006770

St Steel **V2A** Stainless steel, grade 304 **V4A** Stainless steel, grade 316 Ti

FS Strip-galvanised **FT** Hot-dip galvanised