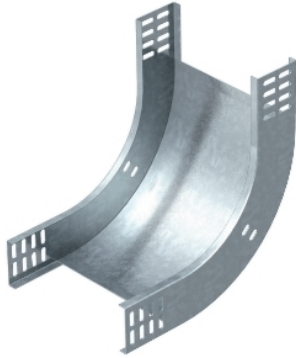
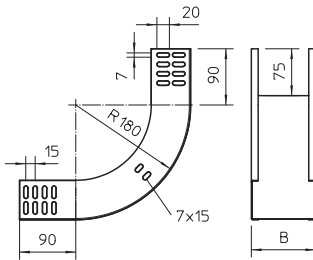


90° vertical bend, rising



Dimensions



The vertical bend is pushed over the end of the cable tray and screwed tight.

Fastening materials should be ordered separately.

90° rising vertical bend, for all cable tray types of 60 mm side height.

Type	Width mm	Pack. pcs	Weight kg/100 pcs.	Item No.
RBV 610 S FS	100	1	66,000	7007005
RBV 615 S FS	150	1	78,000	7007009
RBV 620 S FS	200	1	95,000	7007013
RBV 630 S FS	300	1	124,000	7007017
RBV 640 S FS	400	1	153,000	7007021
RBV 650 S FS	500	1	181,000	7007025
RBV 660 S FS	600	1	210,000	7007029
RBV 610 S FT	100	1	71,000	7007006
RBV 615 S FT	150	1	84,000	7007010
RBV 620 S FT	200	1	103,000	7007014
RBV 630 S FT	300	1	134,000	7007018
RBV 640 S FT	400	1	163,000	7007022
RBV 650 S FT	500	1	190,000	7007026
RBV 660 S FT	600	1	221,000	7007030
RBV 610 S VA4301	100	1	66,000	7007105
RBV 615 S VA4301	150	1	84,000	7007107
RBV 620 S VA4301	200	1	109,000	7007109
RBV 630 S VA4301	300	1	145,000	7007113
RBV 640 S VA4301	400	1	181,000	7007117
RBV 650 S VA4301	500	1	216,000	7007119
RBV 660 S VA4301	600	1	252,000	7007121
RBV 610 S VA4571	100	1	73,000	7006720
RBV 620 S VA4571	200	1	105,000	7006724
RBV 630 S VA4571	300	1	145,000	7006728
RBV 640 S VA4571	400	1	181,000	7006732
RBV 650 S VA4571	500	1	216,000	7006736
RBV 660 S VA4571	600	1	252,000	7006740

St Steel V2A Stainless steel, grade 304 V4A Stainless steel, grade 316 Ti

FS Strip-galvanised FT Hot-dip galvanised