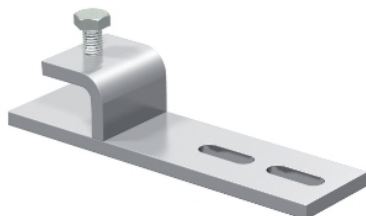


Beam clamp, horizontal BFK 153



Beam clamp for clamping on the steel girder.
The cable support system attached to the beam clamp runs horizontally.

| Type | Dimension B mm | Dimension b mm | Pack. pcs | Weight kg/100 pcs. | Item No. |
|---------|-------------------|-------------------|--------------|-----------------------|----------|
| WMHBS4G | 153 | 101 | 10 | 37,000 | 6003884 |
| WMHBS4T | 153 | 101 | 10 | 38,000 | 6003873 |

St Steel **T** Stainless steel, grade 304

GB Stained **G** Hot-dip galvanised

Dimensions

