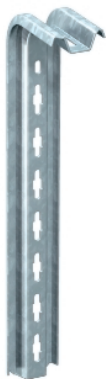


TP support

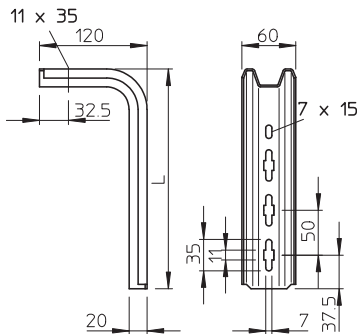


If the profile is fastened directly to the ceiling or the profile is screwed together as head reinforcement, then, for reasons of stability, always use the spacer, type DS 4.  
Important: only use brackets of length 345 mm or less.  
TP support for fastening to horizontal concrete ceilings.

| Type     | Length |  | F in kN | Pack.<br>pcs | Weight<br>kg/ 100 pcs. | Item No. |
|----------|--------|--|---------|--------------|------------------------|----------|
|          | mm     |  |         |              |                        |          |
| WMEBKT18 | 445    |  | 1,05    | 15           | 73,000                 | 6364322  |
| WMEBKT22 | 545    |  | 0,8     | 15           | 80,000                 | 6364349  |
| WMEBKT26 | 645    |  | 0,61    | 15           | 99,000                 | 6364365  |

|                           |                                     |
|---------------------------|-------------------------------------|
| <b>St</b> Steel           | <b>T</b> Stainless steel, grade 304 |
| <b>S</b> Strip-galvanised | <b>G</b> Hot-dip galvanised         |

**Dimensions**



| Type       | Length<br>mm |
|------------|--------------|
| TPS 445 FS | 445          |
| TPS 545 FS | 545          |
| TPS 645 FS | 645          |