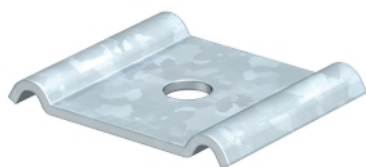


## Hold-down clamp

Hold-down clamp for fastening mesh cable trays on the ground or on stand-off brackets of type DBL.  
Use on mesh cable trays with 50 x 100 mm grid only.



Type	Hole- Ø mm	Pack. pcs	Weight kg/100 pcs.	Item No.
GKS 50 07 FS	7	50	4,000	6015263
GKS 50 11 FS	11	50	4,000	6015276
GKS 50 07 FT	7	50	4,100	6015271
GKS 50 11 FT	11	50	4,100	6015278
GKS 50 11 V4A	11	20	4,000	6015280
GKS 50 07 V4A	7	50	4,000	6015310
GKS 50 11 OP V4A	–	50	4,000	6015315

**St** Steel **V4A** Stainless steel, grade 316 L

**FS** Strip-galvanised **FT** Hot-dip galvanised

### Dimensions

