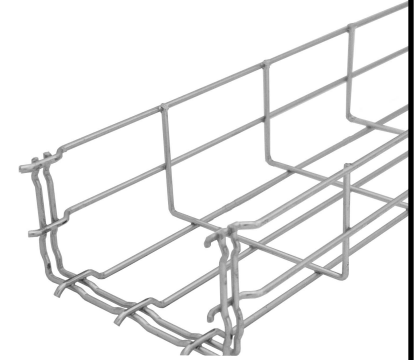


PRODUCT SPECIFICATIONS:

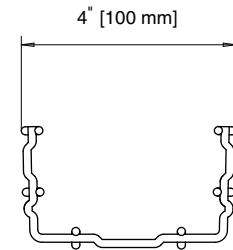
1. STANDARD LENGTH 10' [3 m] GRID PATTERN
2" [50 mm] x 4" [100 mm]
2. TEMPERATURE CLASS: -45°C (-49° F) TO 150°C (302° F)
3. ALL EXPOSED FABRICATED EDGES ARE TAPERED AT 20°
4. INSTALLATION OF THIS PRODUCT MUST BE IN ACCORDANCE WITH CHALFANT MANUFACTURING COMPANY'S RECOMMENDED PROCEDURES & PRACTICES

TABLE 1

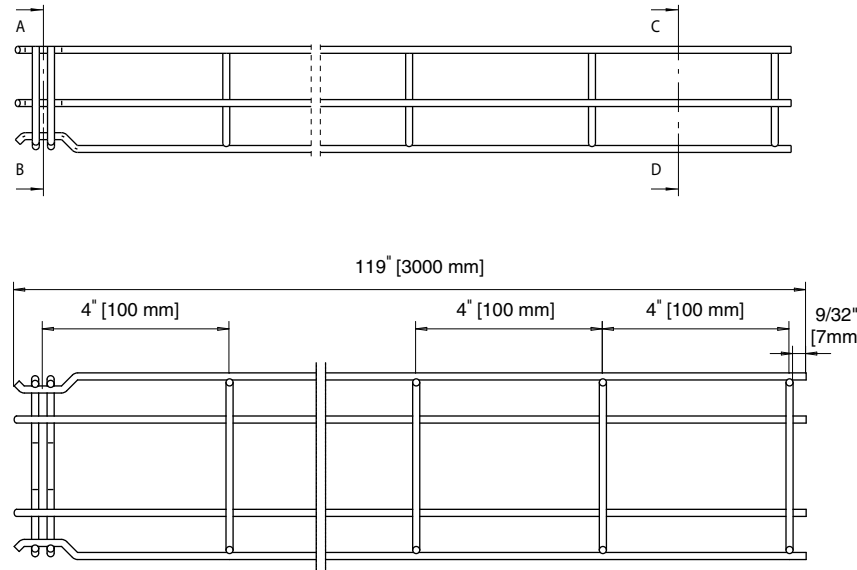
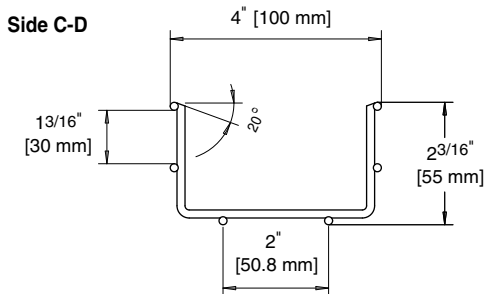
Part Number	Finish	Weight	
		Lbs/Ft	Kg/m
WMGR204S	Electro-Galvanized	4.9	2.2
WMGR204G	Hot-Dipped Galvanized	4.9	2.2
WMGR204T	Stainless Steel (304)	5	2.3
WMGR204Z	Stainless Steel (316)		



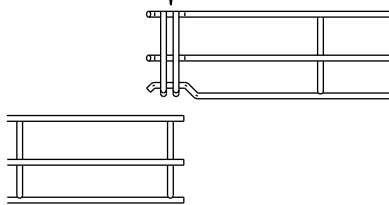
Side A-B



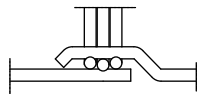
Side C-D



PUSH DOWN
SIDE A-B



INTERLOCKING OF TRAYS



CLASSIFIED

ISO 9001



FILENAME:

CDWMGR204

SCALE: AS NOTED

DRAWN: J.A.B 02/05/00

APPROVED: - C.D.: 0053

REV. - -



50 Pearl Rd,
Brunswick, OH. 44212
Phone: (800) 365-0228 Fax: (330) 273-8149
www.chalfantcabletray.com

PART NO.: **AS IN TABLE**

SHEET 1 OF 1

**2" x 4"
GR MAGIC CABLE TRAY**

DRAWING NO.: WMGR204

THIS DOCUMENT CONTAINS PROPRIETARY INFORMATION AND IS THE PROPERTY OF CHALFANT MANUFACTURING COMPANY. THE CONTENTS OF THIS DOCUMENT SHALL NOT BE DISCLOSED, COPIED AND OR PUBLISHED WITHOUT THE WRITTEN CONSENT OF CHALFANT MANUFACTURING COMPANY.