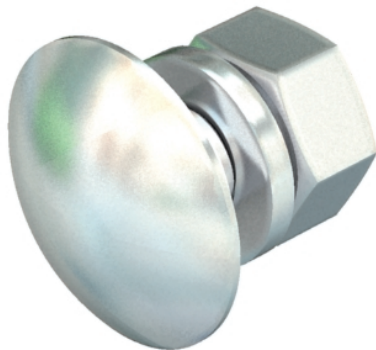


Truss-head bolt



The truss-head screw can be used in combination with hot-dip and double-dip galvanised articles.

Truss-head bolt with square neck. With washer and hexagonal nut.

Type	Dimension mm	Resistance class	Pack. pcs	Weight kg/100 pcs.	Item No.
FRS 10x25 F 8.8	M 10 x 25	—	50	4,500	6407560
FRS 10x25 A2	M 10 x 25	A2-70	50	4,500	6406718
FRS 10x25 A4	M 10 x 25	A4-70	50	4,500	6407524

St Steel **V2A** Stainless steel, A2 **V4A** Stainless steel, A4

F Hot-dip galvanised

Dimensions

